



SANY

Quality Changes the World



SANY TYRE ROLLER SPR SERIES

ENERGY SAVING STAR, LEADING THE INDUSTRY



P1

SANY Brand Proves
Power of China

Fear No One

P2

Full Hydraulic Transmission
Ensures Steady Work and High Reliability

P3

First Innovation
Leading the Field

P4

Overall Upgraded
Compact Performance

P5

High Reliable
Braking System

High Reliability
High Quality

P7

Intelligentized
Design

P8

Equipment
Specification



SANY BRAND PROVES POWER OF CHINA

- Sales revenue of SANY full hydraulic tyre roller has been NO.1 in China since 2003.
- In 2004 centralized air-charging system was developed to solve the problem of unbalanced tyre pressure.
- In 2009 automatic oil spraying technology was developed to avoid asphalt attaching on tyres.
- In 2010 SPR tyre roller was launched to guarantee SANY's leading position.
- In 2011 SPR360 was succe

FEAR NO ONE

In early 2012 the largest tonnage tyre roller SPR360 will be launched in China. 36 tons working weight & 3 meters compacting width make it fear no one to compact thick layer.



SPR360 is under construction on 19 section of Jicha expressway in 2011

FULL HYDRAULIC TRANSMISSION ENSURES STEADY WORK AND HIGH RELIABILITY

● Full Hydraulic Transmission

Hydraulic transmission is widely used in driving system, steering system and braking system. Traveling pump, steering pump and braking pump are integrated and driven by engine via elastic coupling. Motors & cylinders are controlled by hydraulic components to make systems run well.

● Steady Transmission & On-off Operation

Traveling system of SANY tyre roller is driven by closed hydraulic system formed by Saur pumps & motors. Motor drives wheels via driving axle. Stable travel guarantees high gradeability.

● Easy to Operate & Convenient to Maintain

Two gears in traveling system features stepless gear shift. One for compaction is in the range of 0 ~ 8 km/h to guarantee roller working at optimal speed in different job sites. The other one for travel is in the range of 0 ~ 18 km/h to guarantee roller shifting yard at shortest time.



Gear shift switch on operation panel



Perfect maintainability of rear wheels

FIRST INNOVATION LEADING THE FIELD

- Automatic Oil Spraying Technology

First innovation, automatic oil spraying technology, has fixed out common problem in the world – asphalt attaching on tyres. Manual lubricating is history.

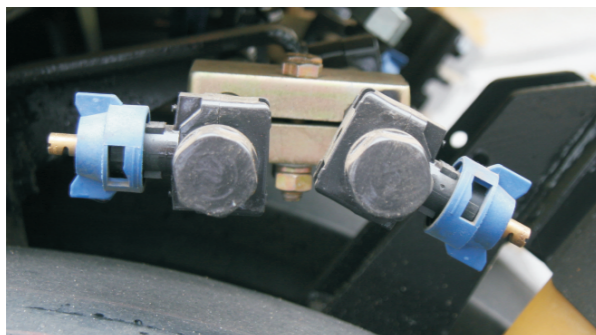
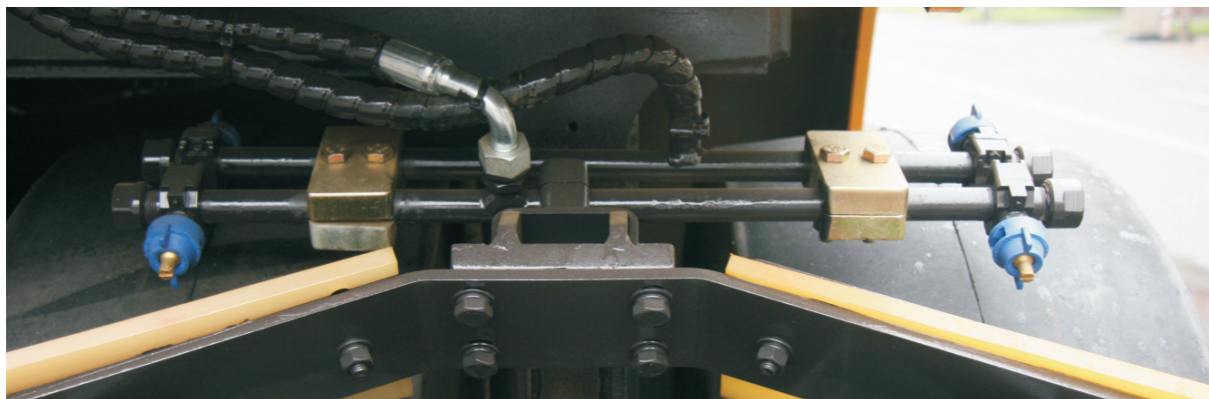
- New Spraying Nozzle Saves Time & Labor

New spraying nozzle improves working reliability effectively for few blockages. It also features less maintenance frequency, well oil-fog distribution, and so on. The use of it is a promise of no asphalt attachment on tyres.



- New Lubricating Device Cut the Cost

Another innovation, lubricating device of oil spraying system, makes oil spraying flexible. For example, you can stop oil spraying for 15 minutes or longer then restart it. This device saves the oil to cut the cost for our clients.



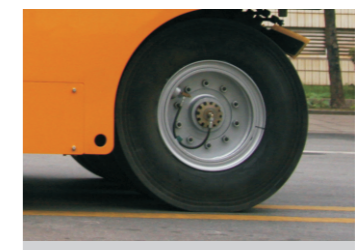
OVERALL UPGRADED COMPACT PERFORMANCE

- Suit for Different Job Sites

Both weight and tyre pressure of SPR series roller are adjustable so that it suits for different job sites. Ground pressure of tyres is adjustable from 200 to 500 kPa to meet compaction requirement of different paving layer.



Front tyre air inlet



Rear tyre air inlet

- Large Compaction Width & High Gradeability

For example, compaction width of SPR260 is wide reach to 2250mm. Compaction area of tyres is large enough to ensure high working efficiency & gradeability.



- Convenient Operation

The dashboard is right in front of operator with console fixed on the frame to offer a nice visibility for operator. Tyre pressure is easy to monitor by pressure gauge in the cab and easy to be adjusted by assembly air-inflation system.



HIGH RELIABLE BRAKING SYSTEM

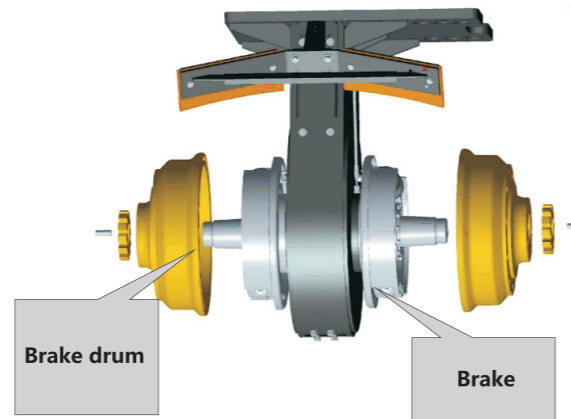
4 level brakes including traveling brake, parking brake, emergency brake and auxiliary pedal brake are provided to guarantee operator's security.

- Reliable Auxiliary Braking System

SANY tyre roller is equipped with hydraulic auxiliary braking system. Hydraulic braking pump is better than brake servo pump.

- Safe, Reliable, Convenient Travelling

Accumulator of SANY tyre roller can make quick brake through supplying high pressure oil. Pedal brake valve is adopted to control drum brake. Left and right pedal can be operated separately. It features short brake distance, high security and convenient operation.



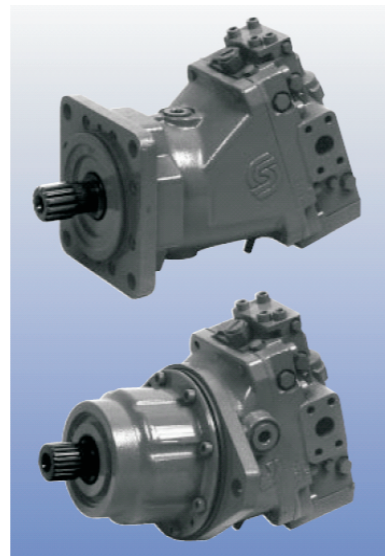
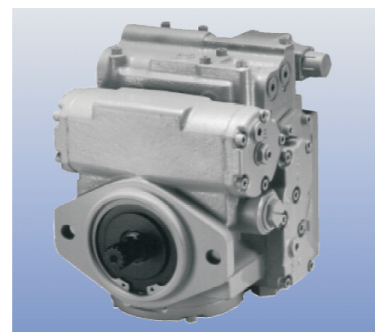
HIGH RELIABILITY & HIGH QUALITY

- Advanced R&D Design & Reliable Performance Test

Methods such as 3D design, FEA, dynamic simulation are widely used in SANY R&D process. Dynamic simulation highly improves integrated machinery's reliability. New model product must pass strict test on strain, pressure, flow rate, speed, torque, and so on. It can be launched only after being qualified.

- Reliable Key Parts

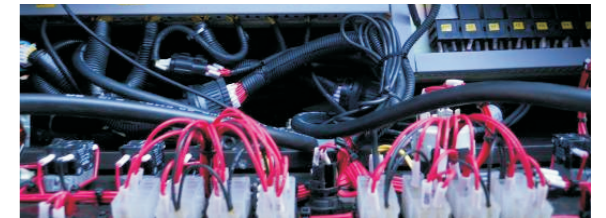
Key parts are purchased from international branded company, such as Cummins engine, KTR elastic coupling, Saur plunger pump & motor. They are guarantee of long lifespan & high reliability of hydraulic system.



INTELLIGENTIZED DESIGN

- PLC Control System

SIEMENS S7-200 programmable logic controller is equipped in SPR series tyre roller to accurately control travelling, oil-spraying, water-spraying, sensor data processing, remote locking/unlocking, and the like. Two communication ports of the controller are connected with TD200 text displayer and GPS remote receiver. Real-time parameter display and remote monitoring maintain function bring you a fantastic operation experience.



- Streamline Design

SANY pneumatic tyre roller features streamline design which is fashion and decent. It's a beautiful view even working in the job site with some spots.



- Comfortable Operating Environment

Full-sealed structure of the cab minimizes the noise outside and avoids dust. Noise insulation layer and heat insulation layer not only function the same but also absorb the shock. Air conditioner changes the seasons. Decent inner & outside decoration of the cab is brilliant.

Air spring & belts limits the opening angle of the doors into reasonable range. Windows can be opened to enjoy fresh air. Details such as cup-seat & data bag are really considerate.



Radio



Loudspeaker

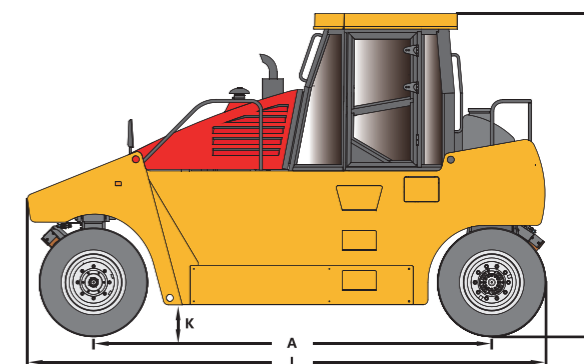
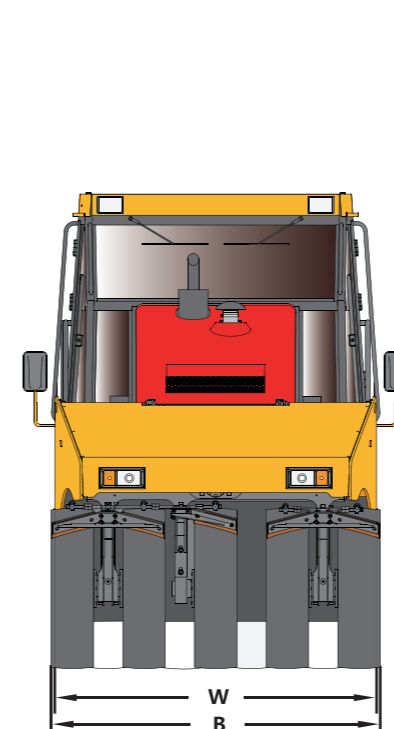
EQUIPMENT SPECIFICATION

SPECIFICATION

SPR Series Tyre Roller Data

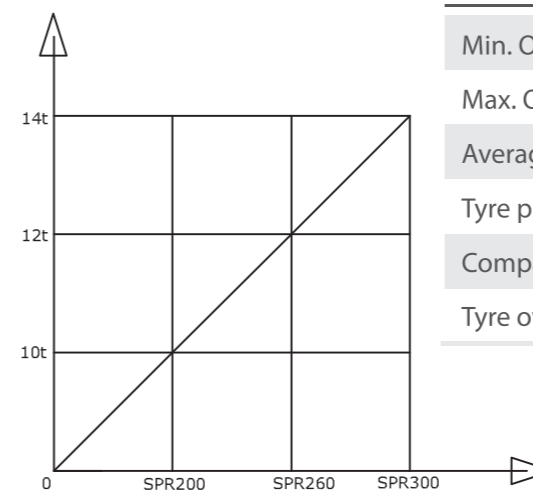
Model	SPR200	SPR260	SPR300	
Compaction Performance	Min. Operating weight(t)	10	12	14
	Max. Operating weight(t)	20	26	30
	Average tyre ground pressure(kPa)	200~400	200~500	200~540
	Tyre pressure(kPa)	200~800	200~800	200~800
	Compaction width(mm)	2250	2250	2420
	Tyre overlap width(mm)	45	45	52
Maneuverability	Travel speed	0~16	0~18	0~16
		0~7	0~8	0~7
	Theoretical gradeability(%)	20	20	20
	Min.Ground clearance(mm)	310	310	315
	Wheelbase(mm)	4000	4000	4190
	Steering angle	±30	±30	±30
	Swing distance(mm)	±50	±50	±50
Capacity	Min. Outer turning diameter(mm)	18600	18600	19000
	Tyre specification	11.00-20-16PR	11.00-20-16PR	12.00-20-16PR
	Tyre number	5+4	5+4	5+4
	Storage battery(VXAh)	24×100	24×100	24×100
	Water tank(L)	400	400	400
	Fuel tank(L)	200	200	220
	Oil tank(L)	160	160	160

DIMENSION



	SPR200	SPR260	SPR300
L (mm)	5200	5200	5400
B (mm)	2250	2250	2420
H (mm)	3220	3220	3285
A (mm)	4000	4000	4190
W (mm)	2192	2200	2400
K (mm)	310	310	315

OPERATION RANGE



Model	SPR200	SPR260	SPR300
Min. Operating weight(t)	10	12	14
Max. Operating weight(t)	20	26	30
Average tyre ground pressure(kPa)	200~400	200~500	200~540
Tyre pressure(kPa)	200~800	200~800	200~800
Compaction width(mm)	2250	2250	2420
Tyre overlap width(mm)	45	45	52

Materials and specifications are subject to change without further notice in accordance with our continuous technical innovations. Photos and illustrations may not include additional equipments.



Quality Changes the World

SANY HEAVY INDUSTRY CO., LTD.

Address: 319 Chuanda Road, Chuansha Economic Park,
Pudong, Shanghai, China, 201200

Service Hotline: +0086-21-60303131

Email: crd@sany.com.cn

For more information, please visit: www.sanygroup.com

For our consistent improvement in technology, specifications may change without notice.
The machines illustrated may show optional equipment which can be supplied at additional cost.