

## Telescopic Loader TL 50



# TELESTAR

*...the wizard  
among those  
of compact  
design*

→ Excellent manoeuvrability!

→ High load capacity!

→ Extremely powerful!



## Telescopic Loader TL 50



### Ranges of Use

#### → Farming and Stockbreeding

- Transport of feed and fertilizers
- Loading and unloading of bales
- Mucking out

#### → Local Use

- Use in yards for recyclable materials or building materials and in disposal sites
- Clearing away, cleaning and sweeping
- Disaster control, rescue work

#### → Industrial Use

- Transport
- Grab operation
- Positioning
- Lifting

#### → Warehousing and Logistics

- Moving of pallets
- Loading and unloading of bulk materials
- High- and low-platform transport
- Stacking

#### → Horticulture and Landscape Architecture

- Planting of trees
- Laying out of ponds or irrigation canals
- Building of playgrounds

#### → Building and Construction Industry

- Work carried out on façades
- Filling in of materials
- Material supply work
- Demolition work

### Special Use

In case information is needed on equipment for special use, we would be pleased to help you.

- × Excellent manoeuvrability in confined space
- × Powerful and of compact functional style
- × Minimum maintenance required
- × Economic efficiency and versatility
- × Flexible possibilities of use

Richard Ostler Maschinenbau GmbH · Schlingener Str. 2a · 87668 Rieden/Germany

Telephone: +49 (0) 83 46/98 20 26 · Telefax: +49 (0) 83 46/98 20 27

e-mail: [info@ostler-maschinen.de](mailto:info@ostler-maschinen.de) · [www.ostler-maschinen.de](http://www.ostler-maschinen.de)

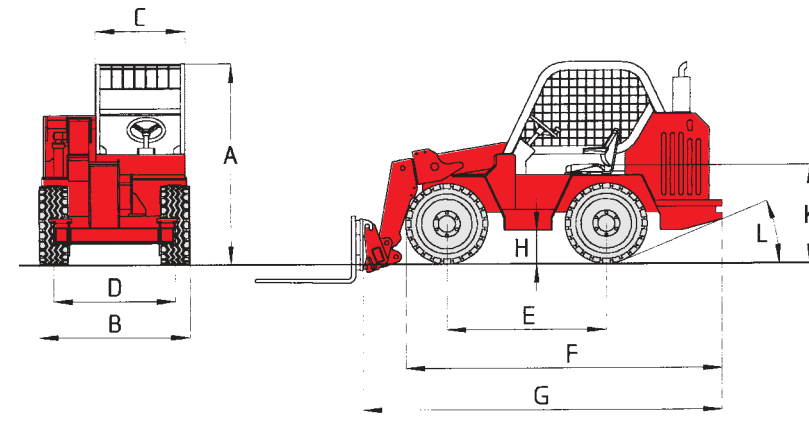
## Technical Data

Slewing angle of main arm	72°
Turning radius (external)	2.20 m
Turning radius (internal)	0.90 m
Tyres	10.0 - 75 x 15
Speed	25 km/h
Dead weight	4,000 kg
Tractive power	1,900 kg
Maximum lifting capacity	1,500 kg
Lifting capacity at maximum range	750 kg
Maximum lifting height	4.50 m

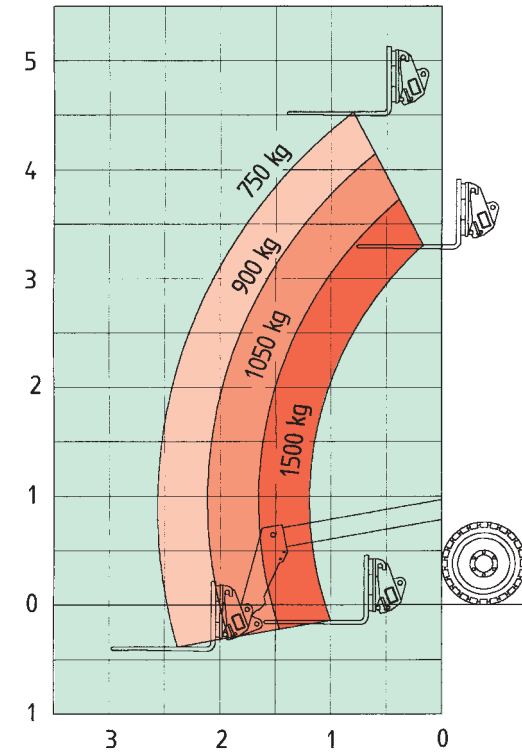
## Dimensions

A Overall height	2.00 m
B Overall width	1.47 m
C Cabine	0.85 m
D Wheel gauge	1.21 m
E Wheel base	1.70 m
F Length of frame	3.15 m
G Overall length	3.70 m
H Clearance above road surface	0.33 m
K Height of seat above ground	0.98 m
L Angle of slope	25°

Dimensions are not binding. Changes in design may be subjects to alterations.



This new type of telescopic loader of OSTLER Maschinenbau GmbH is an innovative development. Its remarkable features are **exceptional compact functional style, excellent manoeuvrability, high load capacity combined with optimum stability as well as a highly torsion-proof telescope arm.** The turning radius is only 900 mm (internal) and 2,200 mm (external).

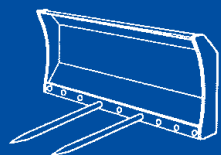


In-house development and production according to CE standards

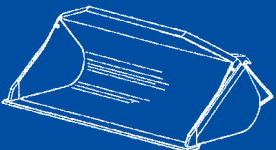


Information on the manifold add-on units is available at your trader's.

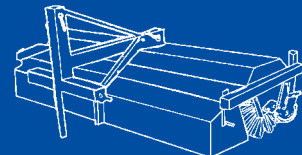
Bale prang



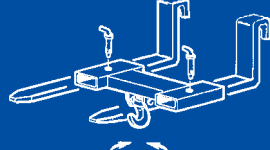
Multifunction shovel



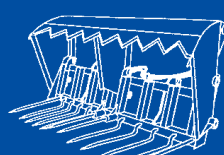
Road sweeping machine



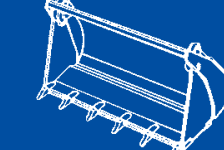
Loading fork with load hook



Silage gripper



Tilting shovel



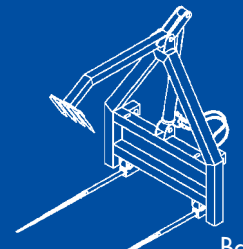
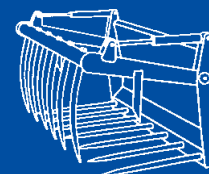
Snow removal blade



Loading and pallet fork



Pitchfork with clam



Bale clam with holding-down device

### Characteristics

- Hydrostatic drive
- Joystick control
- Exceptional compact functional style
- Excellent manoeuvrability

All hoses and lines are layed inside of the telescope arm and can be maintained easily.

### Capacity

Fuel tank 40 l  
Hydraulic-oil tank 38 l

### Travelling Mechanism

The fully hydrostatic drive makes it possible to accelerate smoothly from standing position to desired speed.

Especially for telescopic loader TL 50 we developed a new type of controllable drive axles. Differential locks in both axles, locked by 50%, act on all wheels thus enabling the driver to manoeuvre the loader safely on highly uneven ground. Steering of all axles makes it possible to conduct the following steering actions:

- Front-wheel steering
- Fourwheel steering
- Crab steering

### Drive engine

The robust vibration-absorbed Diesel engine is a rear-mounted transverse engine. It is thus easily accessible if maintenance work has to be carried out.

The 4-cylinder Perkins Diesel engine type 404 C22 is water-cooled with a directly driven blower. Its rated power is 36 kW (50 PS), the rated speed is 2,800 rpm.



### Special Equipment

- Hydraulic quick change attachment
- Load support valves
- Complete lighting equipment according to German Road Traffic Act
- Tyres 1: 12-16.5 NHS with turning rim (overall width B 1.60m)
- Tyres 2: 31x15.5 -15 with turning rim

