

# LIFTER

30.11



officine  
**PICCINI**®



## 30.11

### MOTORE

- Diesel, IVECO AIFO 8045 E00 0 4 cilindri iniezione diretta, raffred ad acqua.
- Cilindrata 3908 cm<sup>3</sup>.
- Potenza max Kw 57 (DIN 70020) a 2300 rpm.

### TRASMISSIONE

- Trasmissione idrostatica con pompa e motore a portata variabile.
- Pedale inching.
- 2 velocità idrostatiche.
- 2 velocità meccaniche.
- Trazione a 4 ruote motrici con riduttori epicicloidali ai mozzi.
- Assali sterzanti: anteriore rigido, posteriore oscillante.
- Velocità max. 27 Km/h.

### FRENI

- Freni di servizio a dischi multipli in bagno d'olio.
- Freno di stazionamento nel ponte anteriore.

### STEREO

- Quattro ruote sterzanti.
- Sterzata load-sensing.
- Tre modalità di sterzata.
- Impianto idraulico.
- Portata max. 88 Lt/1'.
- Pressione max di esercizio 230 bar.
- Joystick 3x1.

### SERBATOI

- Serbatoio olio idraulico 105 Lt.
- Serbatoio gasolio 105 Lt.
- Refrigerante 14 Lt.
- Olio motore 11,5 Lt.

### TELAIO E BRACCIO

- Telaio elettrosaldato in acciaio ad alta resistenza.
- Braccio telescopico a 3 sezioni con scorrimento su pattini anti usura.
- Forche flottanti in acciaio 130x45 mm, L=1100 mm.
- A richiesta, livellamento su ponte anteriore.

### SICUEZZA

- Valvole di blocco su tutti i cilindri.
- Dispositivo antibaltamento frontale con segnalatore visivo ed acustico e blocco automatico dei movimenti aggravanti.
- Dispositivo di arresto macchina senza conducente a bordo.
- Sicurezza dei comandi idraulici contro le monovre accidentali.

### IMPIANTO ELETTRICO

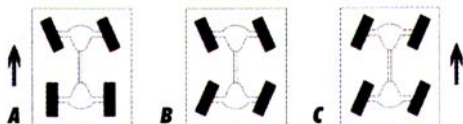
- Tensione nominale 12 V.
- Batteria 120 Ah.
- Alternatore 45 A.
- Impianto illuminazione conforme alla circolazione stradale.

### CABINA

- Cabina conforme alle norme ROPS e FOPS.
- In sonorizzazione a norme CE.
- Visibilità su 360°.
- Volante regolabile.
- Vetro posteriore apribile a compasso.
- Portiera sdoppiata, apribile nella parte superiore.
- Sedile e comandi ergonomici.
- Spie e indicatori per controllo pressione olio motore; temperatura acqua; intasamento filtro; carica batteria; contaore.
- Riscaldamento - illuminazione interna.
- Bolla d'aria per livello

### PNEUMATICI

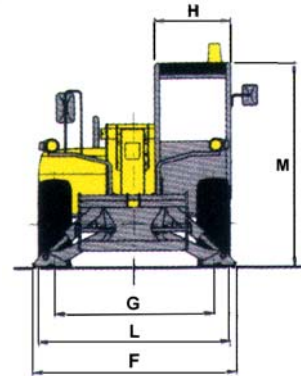
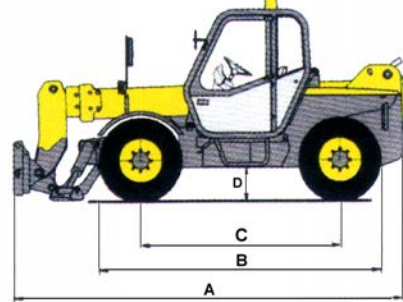
- Pneumatici da 20".
- A richiesta pneumatici da 24".



### STERZATA

- A A 2 ruote
- B A 4 ruote
- C A Granchio

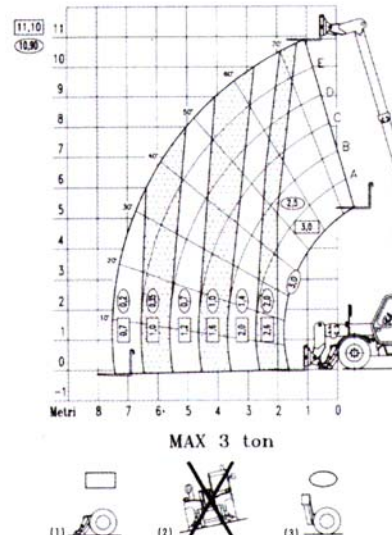
### DIMENSIONI



|   |         |   |         |
|---|---------|---|---------|
| A | 5090 mm | G | 1910 mm |
| B | 3680 mm | H | 920 mm  |
| C | 2600 mm | L | 2310 mm |
| D | 390 mm  | M | 2450 mm |
| F | 2600 mm |   |         |

|                            |         |
|----------------------------|---------|
| Raggio esterno di sterzata | 3150 mm |
| Inclinazione forche        | 134°    |
| Pesa totale a vuoto        | 8900 Kg |

### DIAGRAMMA DI CAPACITA'



- 1 Su stabilizzatori
- 2 Superficie orizzontale piana
- 3 Senza stabilizzatori



## 30.11

### ENGINE

- 4 cylinder, direct injection water-cooled diesel engine IVECO AIFO 8045 EDO.
- Displacement 3098 cm<sup>3</sup>.
- Max. Power 57 kW (DIN 70020) at 2300 rpm.

### TRANSMISSION

- Hydrostatic transmission with pump and motor at variable displacement.
- Inching pedal.
- 1 hydrostatic speed.
- 2 mechanical speeds.
- 4-wheel-drive with epicycle reduction units on hubs.
- 2 steering axles. Rigid front axle, swinging rear axle.
- Max. Speed 27 Km/h.

### BRAKES

- Service brake with oil immersed multiple disk brakes.
- Parking brake on front axle.

### STEERING

- 4 steering wheels.
- Load-sensing steering.
- 3 steering modes.

### HYDRAULIC SYSTEM

- Max. flow rate 88 Lt/min.
- Max. operating pressure 230 bar.
- Joystick control 3x1.

### TANKS

- Hydraulic oil 105 Lt.
- Fuel 105 Lt.
- Engine refrigerant 14 Lt.
- Engine oil 11,5 Lt.

### CHASSIS AND BOOM

- Chassis made of high tensile steel.
- 3 -stage telescopic boom sliding on wear-proof pads.
- Floating fork made of steel 130050 man, L= 1100 mm.
- Leveling cylinder on front axle on request.

### SAFETY

- Safety valves on all rams.
- Anti-overturn device with visual and acoustic alarms. Automatic stop of boom dangerous movement.
- Automatic stop of machine without operator seated.
- Protection of hydraulic controls against accidental maneuvers.

### ELECTRIC SYSTEM

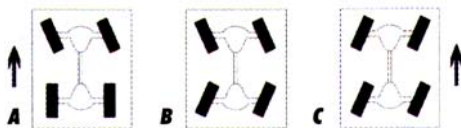
- 12 V power.
- Battery 120 Ah.
- Alternator 45 Ah.
- Lighting system for road circulation.

### CAB

- Complying with ROPS and FOPS standards.
- Soundproof according to EC standards.
- 360° visibility.
- Adjustable steering wheel.
- Opening rear glass.
- Two-section cap door, independent opening of upper part.
- Ergonomic driver's seat and controls.
- Warning lights and gauges for engine oil pressure, water temperature, filter cleaning, battery charge and hour meter.
- Cab heating and cab lighting.
- Lateral inclination gouge.

### TYRES

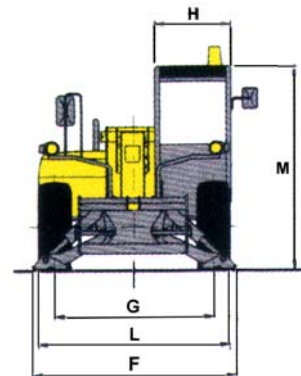
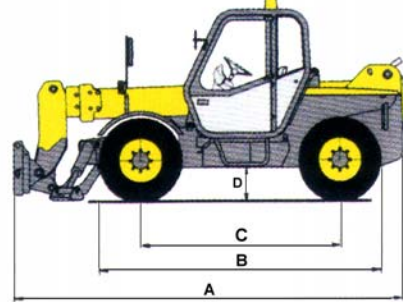
- 20° tyres (24" tyres on request).



### STEERING

- A 2 wheel steering
- B 4 wheel steering
- C Crab steering

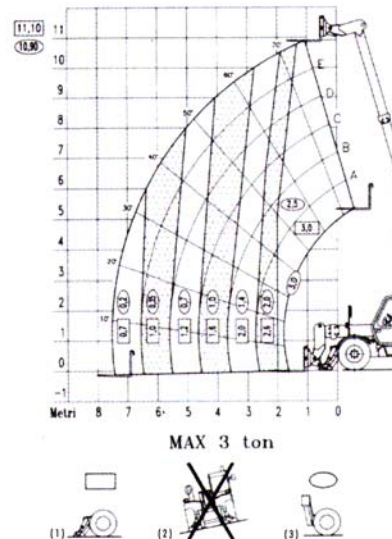
### DIMENSIONS



|   |         |   |         |
|---|---------|---|---------|
| A | 5090 mm | G | 1910 mm |
| B | 3680 mm | H | 920 mm  |
| C | 2600 mm | L | 2310 mm |
| D | 390 mm  | M | 2450 mm |
| F | 2600 mm |   |         |

|                         |         |
|-------------------------|---------|
| Out side turning radius | 3150 mm |
| fork tilting            | 134°    |
| Empty weight            | 8900 Kg |

### LOAD CHART



- 1 On stabilizers
- 2 On flat horizontal ground
- 3 Without stabilizers



#### MOTEUR

- Diesel, IVECO AIFO 8045 E00 4 cylindres à injection directe, refroidi par eau.
- Cylindrée 3908 cm<sup>3</sup>.
- Puissance maxi. Kw 57 (DIN 70020) à 2300 tours/min.

#### TRANSMISSION

- Transmission hydrostatique avec pompe et moteur à dépit variable.
- Pédale inching.
- 2 vitesses hydrostatiques.
- 2 vitesses mécaniques.
- Traction aux 4 roues avec réducteurs épicycloïdaux aux moyeux.
- Essieux de braquage: rigide à l'avant, oscillant à l'arrière.
- Vitesse maxi. 27Km/h.

#### FRFINS

- Freins de service à disques multiples en bain d'huile.
- Frein de stationnement sur l'essieu avant.

#### DIRECTION

- 4 roues directrices.
- Direction assistée avec système load-sensing.
- 3 façons de braquage.

#### INSTALLATION HYDRAULIQUE

- Débit maxi. 88 Lt/1'.
- Pression opérative maxi 230 bar.
- Joystick 3x1.

#### RESERVOIRS

- Huile hydraulique 105L.
- Gasoil 105 L.
- Réfrigérant moteur 14 L.
- Huile moteur 11.5 L.

#### CHASSIS ET BRAS

- Chassis en acier d haute résistance.
- Bras télescopique à 3 étages avec glissement sur des patins anti-usure.
- Fourches flottantes en acier 130x45 mm, L = 1100 mm.
- Sur demande, nivelage de l'essieu à l'avant.

#### SECURITE

- Vannes de sécurité sur tous les vérins.
- Dispositif anti-capotage avec alarme visuel et acoustique et arrêt automatique des mouvements aggravants.
- Dispositif d'arrêt machine sans opérateur 8 hard.
- Sécurité des commandes hydrauliques contre les manœuvres accidentelles.

#### SISTEME ELECTRIQUE

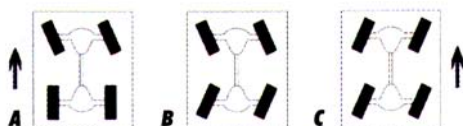
- Tension nominale 12 V.
- Batterie 120 Ah.
- Alternateur 45 A.
- Installation d'éclairage pour circulation routière.

#### CABINE

- Cabine conforme aux normes ROPS FOPS.
- Insonorisation aux nations CE.
- Visibilité sur 360°
- Valant réglable.
- Vitro arrière ouvrable à compas.
- Porte ouvrable en haut.
- Siège et commandes ergonomiques.
- Témoins et indicateurs pour pression huile moteur, température eau, obstruction du filtre charge batterie et compte-heures.
- Réchauffage - Eclairage intérieur.
- Boule à air pour niveau.

#### PNEUS

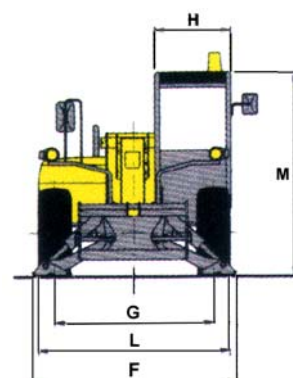
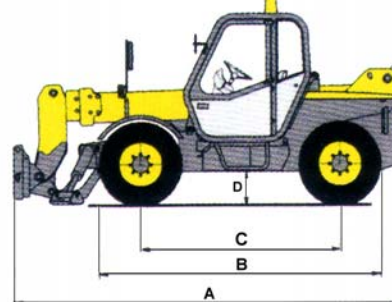
- Pneus de 20" (24" optionnels).



#### BRAQUAGE

- A 2 roues
- B 4 roues
- C En crabe

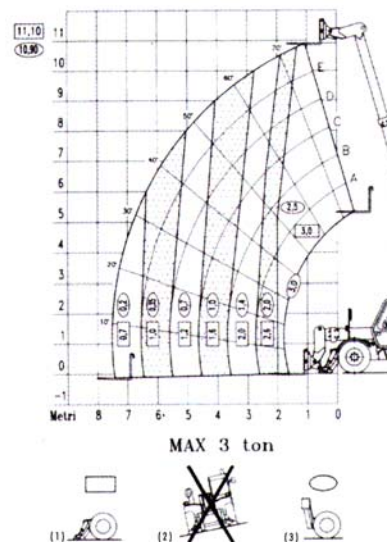
#### DIMENSIONS



|   |         |   |         |
|---|---------|---|---------|
| A | 5090 mm | G | 1910 mm |
| B | 3680 mm | H | 920 mm  |
| C | 2600 mm | L | 2310 mm |
| D | 390 mm  | M | 2450 mm |
| F | 2600 mm |   |         |

|                      |         |
|----------------------|---------|
| Rayon de braquage    | 3150 mm |
| Inclinaison fourches | 134°    |
| Poids à vide         | 8900 Kg |

#### DIAGRAMME DECHARGE



- 1 Sur stabilisateurs
- 2 Sur surface horizontale Plane
- 3 Sans stabilisateurs



## 30.11

### MOTOR

- Diesel, IVECO AIFO 8045 E00 4 cilindros de inyección directa refrigerado por agua.
- Cilindrada 3908 cm<sup>3</sup>.
- Potencia máx. Kw 57 (DIN 70020) a 2300 rev./min.

### TRANSMISION

- Transmisión hidrostática con bomba y motor de caudal variable.
- Pedal inching para acercamiento de precisión.
- 2 velocidades hidrostáticas.
- 2 velocidades mecánicas.
- Tracción a los 4 ruedas con reductores epicicloidales en los cubos.
- Dos ejes de dirección: delantero rígido, trasero oscilante.
- Velocidad máx. 27 Km/h.

### FRENOS

- Frenos de servicio: multi-discos en baño de aceite.
- Freno de aparcamiento en el eje delantero.

### DIRECCION

- Dirección a las cuatro ruedas.
- Sistema load-sensing.
- Tres tipos de dirección.

### INSTALACION HIDRAULICA

- Caudal máx. 88 Lt/1'.
- Presión máx. de trabajo 230 bar.
- Joystick 3x1.

### TANQUES

- Aceite hidráulico 105 L.
- Gasóleo 105 L.
- Refrigerante motor 14 L.
- Aceite motor 11.5 L.

### CHASIS Y BRAZO

- Chasis en acero de alta resistencia.
- Brazo telescópico de 3 secciones con movimiento sobre patines anti-desgaste.
- Horquillas flotantes en acero 130x45 mm, L=1100mm.
- Nivelación del eje delantero. (Opcional)

### SEGURIDAD

- Válvulas de seguridad en todos los cilindros.
- Dispositivo anti-vuelco con alarma visual y acústica. Puro automático de los movimientos agravantes.
- Dispositivo de paro sin conductor a bordo.
- Seguridad de los mundos hidráulicos contra las maniobras accidentales.

### INSTALACION ELECTRICA

- Tensión nominal 12 V.
- Acumulador 120 Ah.
- Alternador 45 A.
- Instalación de luces conforme a circulación vial.

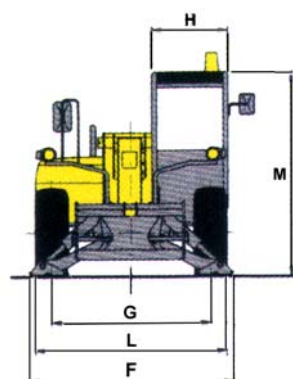
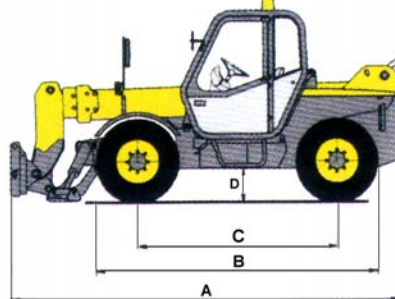
### CABINA

- Cabina conforme a las normas ROPS e FOPS.
- Insonorización según normas de CE.
- Visibilidad sobre 360°.
- Volante regulable.
- Vidrio trasero abatible.
- Puerta realizada en dos partes independientes.
- Asiento y mandos ergonómicos.
- Indicadores y luces para control de la presión aceite motor; temperatura agua; limpieza filtro; carga del alternador; cuenta horas.
- Calefacción y luz de alumbrado interior.
- Indicador de inclinación con nivel de burbujas.

### NEUMATICOS

- Neumáticos de 20" (24" opcionales).

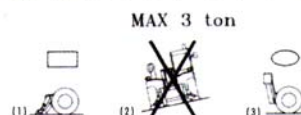
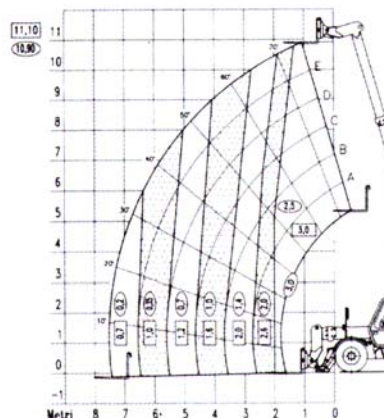
### DIMENSIONE



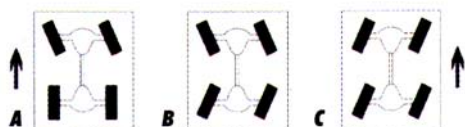
|   |         |   |         |
|---|---------|---|---------|
| A | 5090 mm | G | 1910 mm |
| B | 3680 mm | H | 920 mm  |
| C | 2600 mm | L | 2310 mm |
| D | 390 mm  | M | 2450 mm |
| F | 2600 mm |   |         |

|                        |         |
|------------------------|---------|
| Radio de giro exterior | 3150 mm |
| Inclinación horquillas | 134°    |
| Peso en vacío          | 8900 Kg |

### DIAGRAMA DECARGA



- 1 Sobre estabilizadores
- 2 Superficie horizontal plana
- 3 Sin estabilizadores



### DIRECCION

- A 2 ruedas
- B 4 ruedas
- C Cangrejo



S.S. Trasimeno Ovest 161/c  
06132 Perugia -Italy  
Tel. +39 075 51801 - Fax +39 075 5179166  
Web Site: www.officinepiccini.it  
E-Mail: info@officinepiccini.it

Vendite Italia  
Assistenza  
Export Sales  
Service

075 5180239  
075 5180221  
+39 075 5180240  
+39 075 5180221