

# KOMATSU

## **PC240LC-11** **PC240NLC-11**

*EU Stage IV Engine*

**HYDRAULIC EXCAVATOR**

**PRELIMINARY**



# PC240

**ENGINE POWER**

141 kW / 189 HP @ 2.000 rpm

**OPERATING WEIGHT**

PC240LC-11: 25.300 - 26.200 kg  
PC240NLC-11: 24.700 - 25.300 kg

**BUCKET CAPACITY**

max. 1,89 m<sup>3</sup>

# Walk-Around

## INCREASED FUEL EFFICIENCY AND ENVIRONMENTAL PERFORMANCE

### *Powerful and environmentally friendly*

- Low consumption EU Stage IV engine
- Fuel-saving engine and hydraulic technology
- Adjustable Eco-gauge and auto idle stop
- Reduced wastage

### *First-class operator comfort*

- Fully air suspended operator station
- Low noise design
- Low vibration levels
- Improved widescreen hi-res display monitor
- Improved operator convenience



PC240LCG/NLGG-11

*images may display optional equipment or specifications not available in your area.*

**Total versatility**

- Ideal for a wide range of applications
- 6 working modes
- Wide choice of options
- Built-in versatility
- Ultimate operator control

**Highest safety standards**

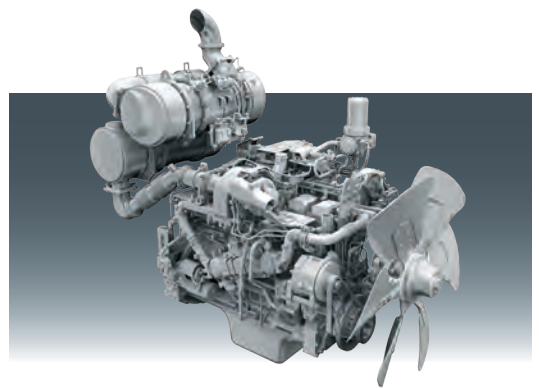
- Safe SpaceCab™  
ROPS compliant with ISO 12117-2:2008
- Improved rear view camera system  
with optional side view camera
- Optimal jobsite safety
- Safe access, easy maintenance
- Falling Object Protection System (FOPS) optional
- Hydraulic auto lock function

**Quality you can rely on**

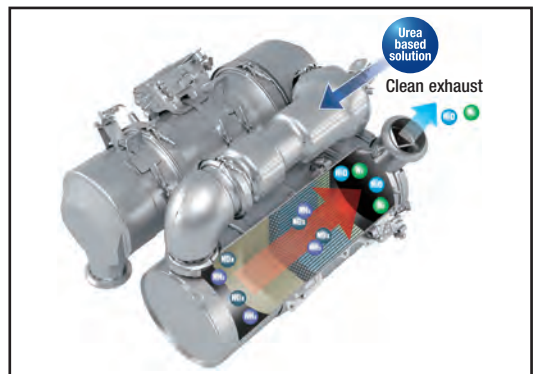
- Reliable and efficient
- Rugged design
- Komatsu-quality components
- Extensive dealer support network

**KOMTRAX™**

- Komatsu Wireless Monitoring System



New, low consumption Komatsu SAA6D107E-3 engine



New heavy-duty after treatment system combines the Komatsu Diesel Particulate Filter (KDPF) and Selective Catalytic Reduction (SCR) to fully comply with EU Stage IV emissions.



Fully air suspended operator station ensures maximum operator comfort.



Improved monitoring system with rear view camera image on the default screen. Eco gauge, eco guidance and fuel consumption gauge help to further reduce consumption.



Complimentary maintenance program for customers

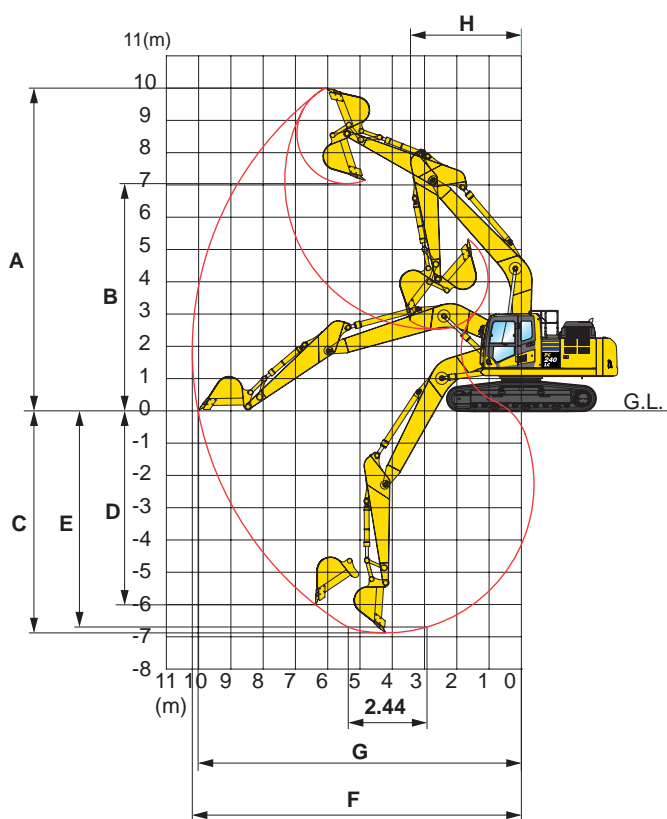
**ENGINE**

Model ..... Komatsu SAA6D107E-3  
 Type ..... Common rail direct injection, water-cooled, emissionised, turbocharged, after-cooled diesel  
 Engine power  
 at rated engine speed ..... 2.000 rpm  
 ISO 14396 ..... 141 kW/189 HP  
 ISO 9249 (net engine power) ..... 132 kW/177 HP  
 No. of cylinders ..... 6  
 Bore x stroke ..... 107 x 124 mm  
 Displacement ..... 6,69 ltr

**HYDRAULIC SYSTEM**

Type ..... HydrauMind. Closed-centre system with load sensing and pressure compensation valves  
 Additional circuits ..... 2 additional circuits with proportional control can be installed  
 Main pump ..... 2 variable displacement piston pumps supplying boom, arm, bucket, swing and travel circuits  
 Maximum pump flow ..... 2 x 237,5 ltr/min  
 Relief valve settings  
 Implement ..... 380 kg/cm<sup>2</sup>  
 Travel ..... 380 kg/cm<sup>2</sup>  
 Swing ..... 295 kg/cm<sup>2</sup>  
 Pilot circuit ..... 33 kg/cm<sup>2</sup>

**WORKING RANGE**



**UNDERCARRIAGE**

Construction ..... X-frame centre section with box section track frames  
 Track assembly  
 Type ..... Fully sealed  
 Shoes (each side) ..... 51 (PC240LC), 49 (PC240NLC)  
 Tension ..... Combined spring and hydraulic unit  
 Rollers  
 Track rollers (each side) ..... 10 (PC240LC), 9 (PC240NLC)  
 Carrier rollers (each side) ..... 2

**ENVIRONMENT**

Engine emissions ..... Fully complies with EU Stage IV exhaust emission regulations  
 Noise levels  
 LwA external ..... 103 dB(A) (2000/14/EC Stage II)  
 LpA operator ear ..... 70 dB(A) (ISO 6396 dynamic test)  
 Vibration levels (EN 12096:1997)\*  
 Hand/arm ..... ≤ 2,5 m/s<sup>2</sup> (uncertainty K = 0,53 m/s<sup>2</sup>)  
 Body ..... ≤ 0,5 m/s<sup>2</sup> (uncertainty K = 0,28 m/s<sup>2</sup>)  
 \* for the purpose of risk assessment under directive 2002/44/EC, please refer to ISO/TR 25398:2006.

ARM LENGTH	2,0 m	2,5 m	3,0 m	3,5 m
A Max. digging height	9.665 mm	9.790 mm	10.000 mm	10.300 mm
B Max. dumping height	6.715 mm	6.860 mm	7.035 mm	7.360 mm
C Max. digging depth	5.825 mm	6.320 mm	6.920 mm	7.320 mm
D Max. vertical wall digging depth	4.750 mm	5.130 mm	6.010 mm	6.230 mm
E Max. digging depth of cut for 2,44 m level	5.585 mm	6.100 mm	6.700 mm	7.150 mm
F Max. digging reach	9.270 mm	9.480 mm	10.180 mm	10.580 mm
G Max. digging reach at ground level	9.070 mm	9.670 mm	10.020 mm	10.420 mm
H Min. swing radius	3.300 mm	3.320 mm	3.450 mm	3.340 mm