

 **Kawasaki**

65TMV-2

149HP | 2.3 – 2.5 yd³ BUCKET CAPACITY



RUGGED AND DEPENDABLE

A COMPLETE SOLUTION

- ▶ Certified Emissions-Compliant 149 HP Isuzu diesel engine
- ▶ 2.3 to 2.5 cu. yard bucket available
- ▶ Air conditioning, standard
- ▶ High Lift and Super High Lift configurations available
- ▶ Increased Horsepower and Torque
- ▶ Optional ELS (Efficient Loading System)
- ▶ Dual engine mode switch (Normal & Fuel Efficient)
- ▶ Ride Control option provides stable load handling
- ▶ Single hydraulic control, standard, optional dual lever hydraulic control available
- ▶ Automatic powershift transmission with four forward and reverse speeds
- ▶ Accepts a wide assortment of attachments to handle many jobs
- ▶ Torque-proportioning differentials for longer tire life and less wheel spin
- ▶ Transmission has helical gears which reduce noise level and vibration
- ▶ Adjustable declutch allows the operator to adjust the declutch to various operating conditions
- ▶ MODM (Machine Operation Diagnostic Module) provides essential operations and diagnostic information in an easy-to-read LED display
- ▶ New Gull-Wing engine compartment provides easy serviceability
- ▶ Rear Grille swings open for easy access to the radiator for cleaning in dusty environments
- ▶ Aluminum Cooler Package resists many chemical environments
- ▶ Wide front fenders with mud flaps, standard

**EASY TO OPERATE.
EASY TO MAINTAIN.
EASY TO DO BUSINESS WITH.**

POWER TO SPARE.

The 65TMV-2 features a redesigned ROPS cab with operator-friendly features. The operator may now customize settings and make adjustments to the loader controls to work more efficiently in the current operating conditions or environment. New features like the Adjustable Declutch, Dual Boom Kickout Control, and Dual Mode Engine Switch, allow the operator to make adjustments from the comfort of the cab increasing productivity and efficiency. Options such as the Limited Slip Differentials and ELS (Efficient Loading System) allow the operator additional controls to adapt the 65TMV-2 loader to the working conditions.



COMFORTABLE, EFFICIENT, SAFE.

The 65TMV-2 features standard air conditioning and heater. The Air Ride seat is standard. The operator compartment has increased leg room. Options such as the F-R Directional Switch, Ride control, and Dual Lever Hydraulic Control allow the operator additional ease of operation and comfort.

VERSATILE, RELIABLE, STRONG.

Like all Kawasaki loaders, the 65TMV-2 has a 45+ year heritage of strength and reliability.

The 65TMV-2 is available with several buckets, bucket teeth, and bolt-on cutting edge combinations. A third spool valve is available to handle a number of attachments and extend the wheel loader's versatility.

Features such as spin-on filters, grouped grease fittings, sealed universal joints, hinged hydraulic oil cooler, all provide easy field maintenance. The new MODM (Machine Operation Diagnostic Module) provides essential operational and diagnostic information in an easy-to-read LCD display.

FAILURE IS NOT AN OPTION.

Kawasaki is dedicated to keeping your wheel loader up and running, even in the most challenging situations. Starting with the KLEW (Kawasaki Loaders Early Warning) Oil Analysis System, designed to eliminate unnecessary maintenance and downtime, to our 24-hour parts shipment service, and our extensive rebuild program, Kawasaki has the expertise and experience to respond quickly to your needs.



Kawasaki and their dealer organization offer comprehensive support and service programs designed to keep you on the job.

POWER AND PERFORMANCE PROVIDE UNMATCHED PRODUCTIVITY



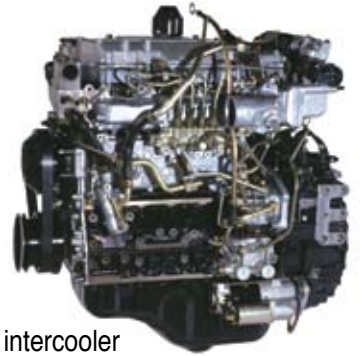
ISUZU IS THE LEADER IN MEETING AND EXCEEDING GLOBAL EXHAUST EMISSION STANDARDS

Isuzu uses I-CAS (Isuzu Clean Air Solutions) technology to meet the US Tier III requirements without sacrificing efficiency or fuel economy.

- I-CAS
- Optimal Combustion Technology
- Post-Combustion Treatment Technology
- Electronic Control Technology
- Extended Oil Change intervals
- Increased Peak Torque provides improved performance, better rimpull.

WORLD-CLASS ENGINES

- 149 HP Isuzu 4HKIX diesel
- Tier III Emissions Certified
- Engineered for longer service life
- Reliable and fuel efficient
- 24 volt battery system for reserve power
- Turbocharger with air-cooled intercooler



FUEL EFFICIENT MODE



The operator can select either "Power" or "Fuel Efficient" engine mode. Power mode provides added power for extreme applications. Fuel Efficient mode offers better fuel economy for standard applications.

HIGH EFFICIENCY HYDRAULIC SYSTEM

- Dry, reliable
- Cast iron and aluminum, dirt tolerant, gear pumps
- Easy access to two-spool control valve
- Large oil reservoir keeps oil cooler

TRANSMISSION

- Automatic transmission selects optimum speed from second to fourth gear
- Single lever control
- Switch activates adjustable transmission declutch on the left brake pedal **1**
- Transmission declutch can be set by the operator to match operating conditions
- Downshift button speeds cycle times and reduces operator fatigue
- Helical gears reduce noise and vibration

AXLES/BRAKES

- Torque Proportioned Differentials improve traction in slippery conditions
- 20.5-25-12PR (L-2) tires standard
- Optional L-2 and L-3, bias and radial, tires available in 17.5-25 and 20.5-25 sizes
- 3-piece rims standard **2**
- Inboard-mounted, dual-circuit wet disc brakes **3**
- Easy maintenance
- High capacity
- Long life

LIFT ARMS/BUCKETS

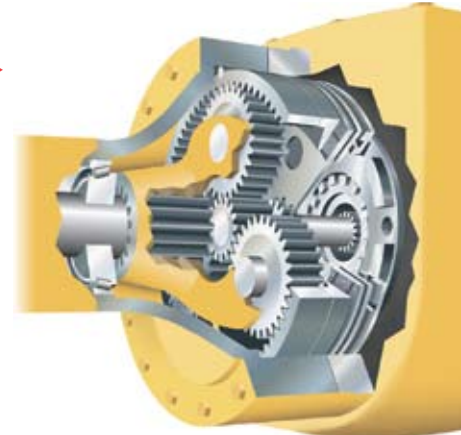
- Parallel Linkage keeps loads level throughout lift cycle
- High breakout force
- 2.3 to 2.5 cu. yd. buckets
- Easy loading
- Excellent load retention
- Full assortment of edges and teeth
- Complete array of attachments available

ECONOMIC AND EFFICIENT SYSTEMS

- Hydraulic System, designed for energy efficiency with the steering flow to supplement the main circuit once steering demand is met. This allows for full utilization of the pump capacity for efficient operation in all conditions.
- Adjustable Boom Kickout can be set by the operator to attain proper dump height and return-to-dig height **4**
- Automatic 4-speed transmission, single grip shift lever
- Bucket leveler and boom kick-out standard

STRUCTURED TO LAST

- Redesigned buckets provide easy loading and excellent load retention
- Full assortment of edges and teeth
- Complete array of attachments available
- Massive center pins and bearings **5**
- Heavy box frame rear chassis **6**



THE COMFORT ZONE



ENJOY THE RIDE

- The cab provides excellent visibility in all directions **1**
- The front windshield is flat glass mounted in rubber gaskets that make windshield replacement fast and easy.
- Viscous mounting of the cab reduces vibration and noise
- Fully certified ROPS/FOPS cab meets all regulations
- Increased Leg Room
- Air Conditioning, standard
- Air Ride Seat, standard **2**
- Tilting and Telescopic Steering column
- Easy access to cab on both sides of machine
- Sliding side windows
- AM/FM CD Radio with AUX Input, standard
- Increased personal storage
- Front and Rear window wipers and washers

1

TOTAL COMMAND. TOTAL CONTROL.

- MODM (Machine Operation Diagnostic Module) offers information to make the operation, maintenance and troubleshooting more efficient. With this information, operators, maintenance and technical personnel can quickly determine key operating data. **3**
- Downshift Button, located on the boom control lever provides quick, convenient downshifting from 2nd gear to 1st gear.
- Adjustable Declutch allows the operator to select the location of the left brake pedal where the declutch engages. This allows the operator to adjust for varying operating conditions easily.
- 12V outlet for operator to use 2-way radios and other plug-in devices

2



3



ACCESSIBILITY, SERVICEABILITY, DURABILITY

- Sealed universal joints only require greasing at 12,000 hour intervals extending the life expectancy of the drive shaft
- Easy engine access with gull wing engine panels and side door opening.
- Easy access to filters, drains and fittings
- MODM (Machine Operation Diagnostic Module) offers information to make the operation, maintenance and troubleshooting more efficient. With this information, operators, maintenance and technical personnel can quickly determine key operating data.
- Automatic reversible cooling fan and swing-out hydraulic cooler provide exceptional cooler cleanliness and access.
- Increased Transmission Capacity provides greater service life
- Inboard Wet Disc Brakes, sealed, provide high capacity braking and protection from contamination. The dual brake system separates the front and rear axles for added safety.
- Sealed Deutsch DT electrical connectors are used throughout the system to reduce corrosion and improve durability
- JRB Quick Coupler and Attachments



OPTIONS

OPTIONAL EQUIPMENT

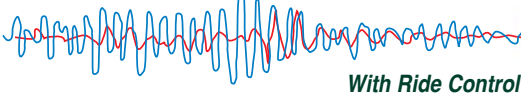
- ELS — Efficient Loading System, increases rimpull power when digging while demanding less fuel. Increases productivity and fuel efficiency. A switch on the instrument control panel allows operator to activate from cab. **1**
- Limited Slip Differentials provide additional traction for applications requiring extreme traction control. **2**
- F-R Directional Switch allows the operator to select direction directly from the side console. **3**
- Ride Control offers a smooth ride to improve load retention and increase travel speeds. **4**

- HID (High Intensity Discharge) lights are extremely bright lights with exceptionally long service life.
- No-Spin Differential
- Back-up Camera
- Dual Lever
- Third spool hydraulic attachments

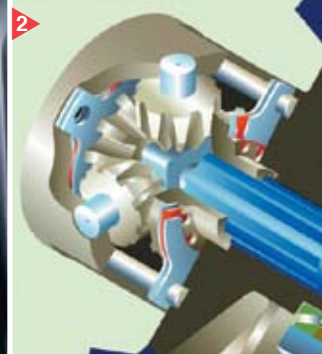
SPECIAL APPLICATION PACKAGES

- Logging/Woodchip
- Waste/Refuse/Recycling

Without Ride Control



With Ride Control



OPERATING SPECIFICATIONS

ENGINE	
Gross Power (SAE J1995)	154 HP/2200 RPM
Net Power (SAE J1349)	149 HP/2200 RPM
Net Peak Torque	431 lb.-ft./1500RPM
Make/Model/Fuel Type	ISUZU/4HKIX/Diesel
Type	4-cycle, watercooled, in-line direct injection type with turbo charger and air-cooled intercooler
Number of cylinders	4
Bore and stroke	4.53" x 4.92" (115mm x 125mm)
Total displacement	317 in ³ (5.193 L)
Alternator	AC24V – 1.2kw (50amp)
Battery	12V – 100AH (630CCA), 2 units

TORQUE CONVERTER AND TRANSMISSION	
Torque converter	3 elements, single stage
Torque stall ratio	3.32:1
Main clutches	Wet hydraulic, multi-disc type
Cooling method	Forced circulation type
Transmission	Full power shift, 4 forward, 4 reverse with automatic mode (2nd – 4th) with downshift switch for 2nd – 1st downshifting
Forward & reverse (maximum speed)	1st: 5.3 MPH (8.5 km/hr) 2nd: 8.6 MPH (13.8 km/hr) 3rd: 13.4 MPH (21.4 km/hr) 4th: 23.0 MPH (37.0 km/hr)

SYSTEMS CAPACITY		
LOCATION	Gallons	Liters
Engine (coolant)	7.9	(30)
Fuel tank (diesel fuel)	55.5	(210.0)
Engine oil (oil pan)	4.9	(18.6)
Front axle (gear oil)	6.6	(25.0)
Rear axle (gear oil)	6.6	(25.0)
Torque converter and transmission (engine oil)	7.9	(30.0)
Hydraulic system including tank (hydraulic oil)	26.4	(100.0)

HYDRAULIC AND STEERING SYSTEM		
Steering type	Articulated frame steering	
Steering mechanism	Hydraulic power steering unit, direct type	
Lift (boom) cylinder	Two (2) double-acting piston type: 4.7" x 28.7" (120mm x 730mm)	
Tilt (bucket) cylinder	Two (2) double-acting piston type: 3.9" x 31.9" (100mm x 810mm)	
Steering cylinder	Two (2) double-acting piston type: 2.5" x 14.7" (65mm x 374mm)	
Steering oil pump	Gear type: 27.7 GPM/996psi @ 2200 RPM (105 LPM/70kg/cm ² @ 2200 RPM)	
Main oil pump	Gear type: 16.1 GPM/996psi @ 2200 RPM (61 LPM/70kg/cm ² @ 2200 RPM)	
Pilot oil pump	Gear type: 8.7 GPM/996psi @ 2200 RPM (33 LPM/70kg/cm ² @ 2200 RPM)	
Relief valve set pressure	Loading	3000 psi (210 kg/cm ²)
	Steering	3000 psi (210 kg/cm ²)
HYDRAULIC CYCLE TIME*		
Lifting time (at full load)	5.8 sec.	
Lowering time (empty)	2.9 sec.	
Bucket dumping time	2.2 sec.	
TOTAL	10.9 sec.	

* Measured in accordance with SAE J732C

AXLE SYSTEM		
Drive system	4-wheel drive	
Front and rear axle	Semi-floating type	
Tires	Standard	20.5-25-12PR (L-2)
	Optional	17.5-25-12PR (L-2) (L-3) 20.5-12-25 (L-3)
Reduction and differential gear	Spiral bevel/gear, 1 stage reduction, torque proportioning type	
Final reduction gear	Internal planetary gear, inboard mounted	
Oscillation angle	±12° (total ±24°)	

BRAKE SYSTEM	
Service brakes	4 wheel adjustment-free, wet multiple disc brakes. Controlled by full hydraulic system. Dual circuit.
Parking/Emergency brake	Spring-applied, oil pressure-released. Dry drum type located in front driveline.

Materials and specifications are subject to change without notice and without obligation on the part of the manufacturer. The specifications supplied, while believed to be completely reliable, are not to be taken as warranty for which we assume legal responsibility.

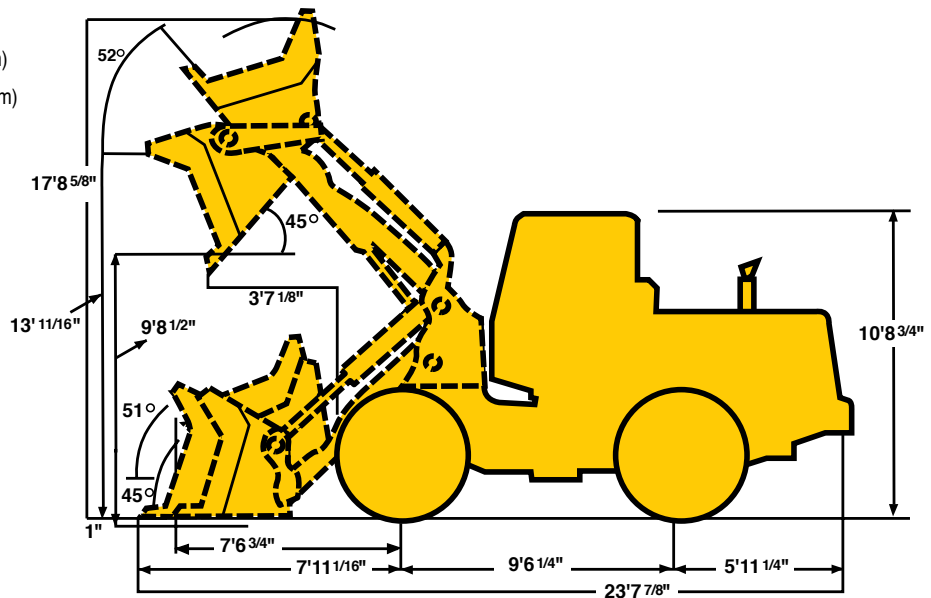
OPERATING SPECIFICATIONS

WEIGHTS AND DIMENSIONS (SUPPLEMENTAL DATA)

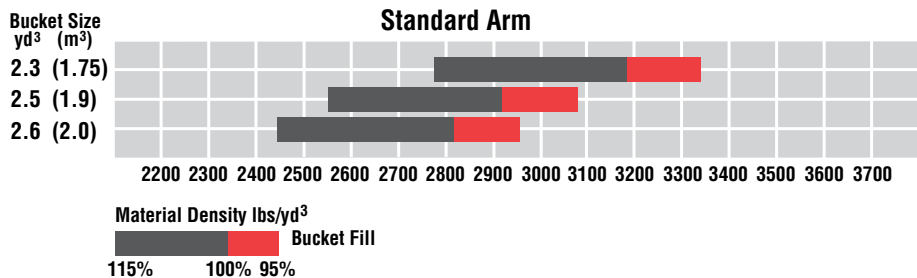
	Operating Weight	Tipping Load		Overall Width (Outside Tire)	Vertical Dimensions	Overall Length
		Straight	Full Turn			
ROPS Canopy (Instead of ROPS Cab)	lb (kg)	-310 (-140)	-285 (-130)	-255 (-115)	in (mm)	
Remove ROPS (for transport only)	lb (kg)	-1100 (-500)			in (mm)	-7 ¹ / ₁₆ " (-180)
Air conditioner (Deletion)	lb (kg)	-220 (-100)	-265 (-120)	-220 (-100)	in (mm)	
Belly Guard (rear frame)	lb (kg)	+240 (+110)	+310 (+140)	+270 (+120)	in (mm)	
Tires: 17.5-25-12PR (L-2)	lb (kg)	-795 (-360)	-520 (-235)	-440 (-200)	in (mm)	-1 ³ / ₁₆ " (-30)
20.5-25-12PR (L-3)	lb (kg)	+265 (+120)	+175 (+80)	+140 (+65)	in (mm)	-2 ³ / ₄ " (-70)

Base Tire 20.5-25-12PR (L-2)

Tread 6'11¹/₁₆" (1,870mm)
 Width (outside tire) 7'10¹/₁₆" (2,405mm)
 Width (outside bucket) 8'7¹/₁₆" (2,450mm)
 Equipped with GSC bucket with bolt on cutting edge
 20.5-25-12PR (L-2) Tire and ROPS Cab



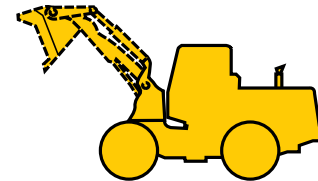
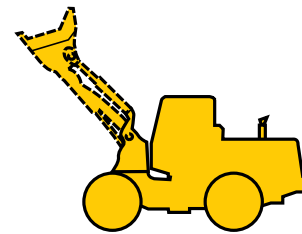
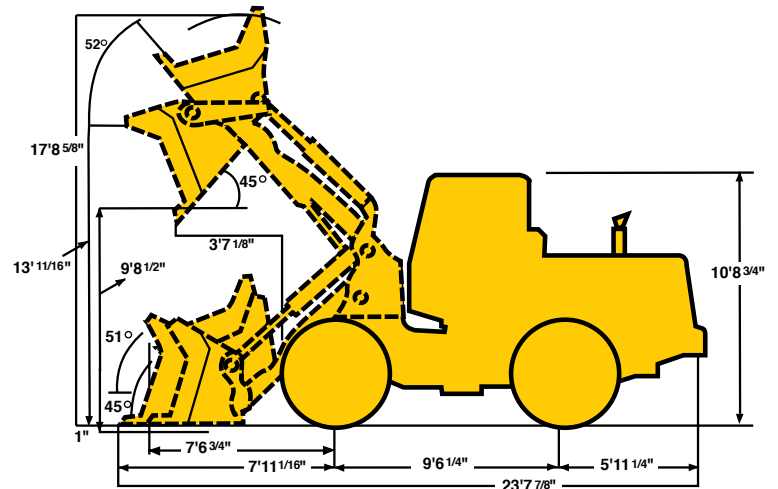
BUCKET SELECTION CHARTS



BUCKET DATA

General Purpose Bucket

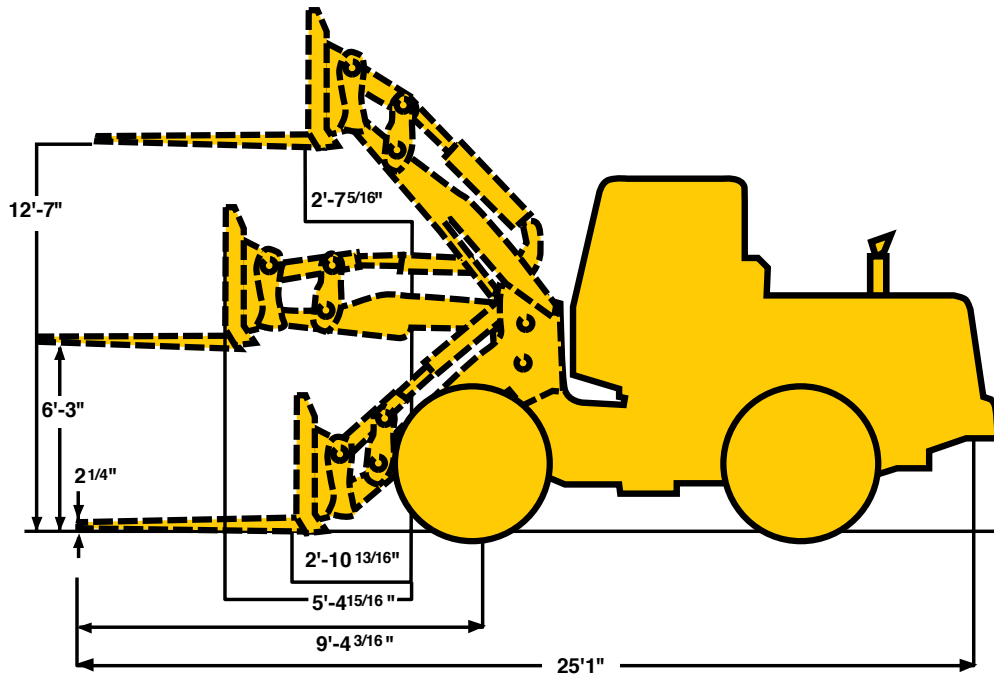
		General Purpose		
		With Bolt-on Cutting Edge	With Teeth	
Capacity	Heaped	yd ³ (m ³)	2.5 (1.9)	2.3 (1.75)
	Struck	yd ³ (m ³)	2.3 (1.75)	2.0 (1.5)
Maximum dumping clearance		ft-in (mm)	98 ¹ / ₈ " (2,950)	9'5" (2,870)
Dumping reach (to front of bucket edge or tooth)		ft-in (mm)	37 ¹ / ₈ " (1,095)	3'9 ¹ / ₄ " (1,150)
Bucket hinge pin height		ft-in (mm)	13 ¹¹ / ₁₆ " (3,980)	13 ¹¹ / ₁₆ " (3,980)
Digging depth		ft-in (mm)	1" (25)	19 ¹ / ₁₆ " (40)
Breakout force		lb (kg)	24,100 (10,930)	25,530 (11,580)
Bucket tilt-back angle	at ground level		45°	45°
	at carry position		51°	51°
Overall	Length	ft-in (mm)	23'7 ⁷ / ₈ " (7,210)	23'11 ¹³ / ₁₆ " (7,300)
	Height	ft-in (mm)	10'8 ³ / ₄ " (3,270)	10'8 ³ / ₄ " (3,270)
Width (outside tire)		ft-in (mm)	7'10 ¹¹ / ₁₆ " (2,405)	7'10 ¹¹ / ₁₆ " (2,405)
Width (outside bucket)		ft-in (mm)	8 ⁷ / ₁₆ " (2,450)	8 ⁷ / ₁₆ " (2,450)
Wheel base		ft-in (mm)	9'6 ¹ / ₄ " (2,900)	9'6 ¹ / ₄ " (2,900)
Minimum turning radius	at outside bucket	ft-in (mm)	18'8 ³ / ₁₆ " (5,695)	18'9 ³ / ₈ " (5,725)
	at center of outside tire	ft-in (mm)	16'1 ¹¹ / ₁₆ " (4,920)	16'1 ¹¹ / ₁₆ " (4,920)
Minimum ground clearance		ft-in (mm)	1'5 ¹ / ₂ " (445)	1'5 ¹ / ₂ " (445)
Full articulation angle		degree	40°	40°
Operating weight (with ROPS Cab)		lb (kg)	26,960 (12,230)	26,875 (12,190)
Static tipping load (with ROPS Cab)	Straight	lb (kg)	18,760 (8,510)	19,000 (8,620)
	Full turn	lb (kg)	16,070 (7,290)	16,270 (7,380)



The weight and load figure includes counterweight, air conditioner, enclosed ROPS cab, hydraulic coupler, 20.5-25-12PR (L-2) tires, full fuel tank and operator.

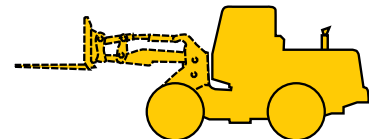
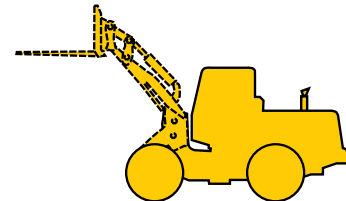
65TMV-2

ATTACHMENT DATA



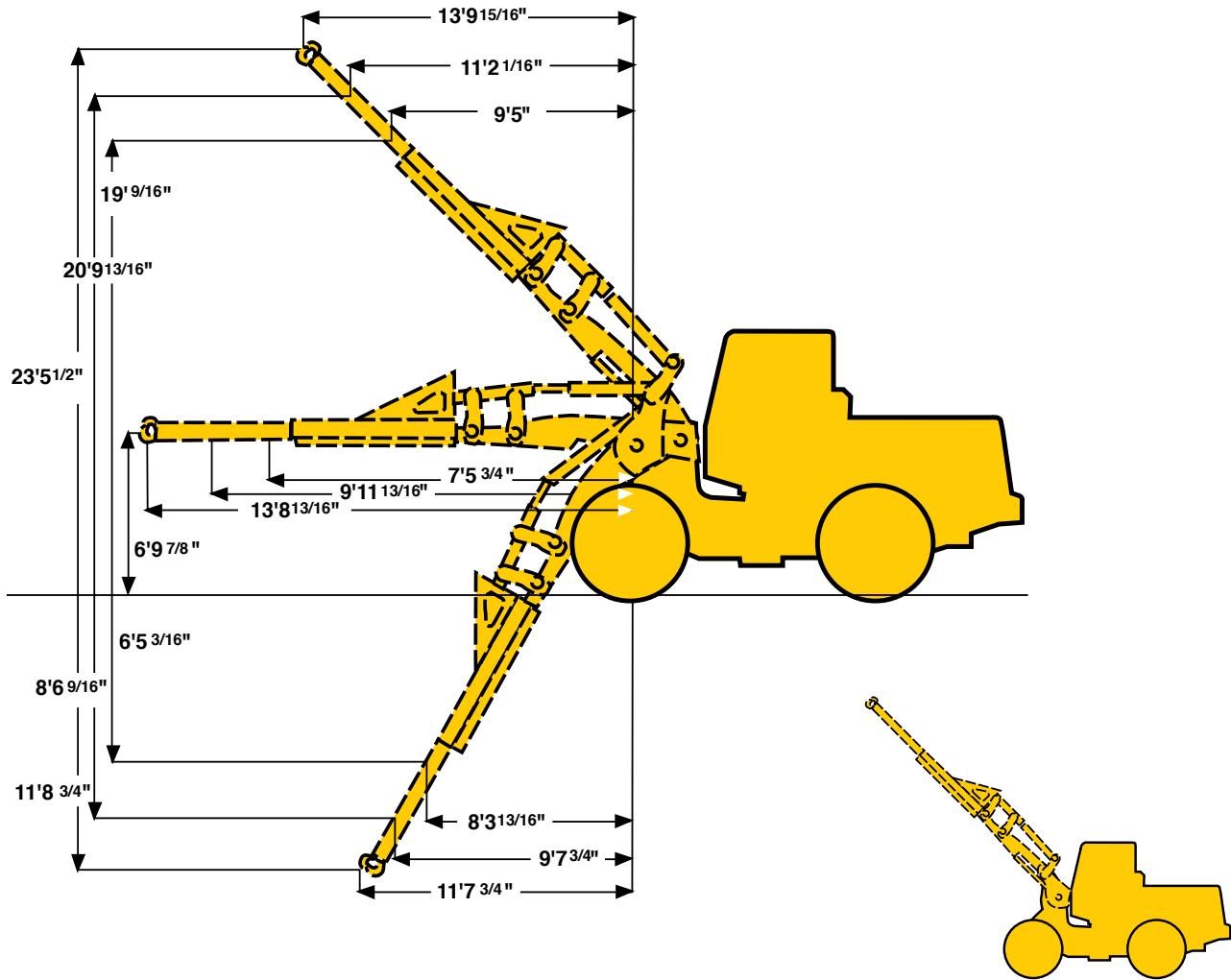
Construction Utility Fork

SPECIFICATIONS WITH FORKS			
Fork Tine length		48"	60"
Ground to top of tine clearance	ft-in (mm)	12'7" (3,835)	12'7" (3,835)
Reach with arms horizontal and forks level	ft-in (mm)	9'5" (2,870)	10'5" (3,175)
Overall Length	ft-in (mm)	25'1 ³ / ₁₆ " (7,650)	26'1" (7,950)
Static tipping load with level arms and forks, load center straight	lb (kg)	15,155 (6,875)	13,580 (6,160)
Static tipping load with level arms and forks, load center full 40° turn	lb (kg)	12,985 (5,890)	11,630 (5,275)
Operating weight*	lb (kg)	26,610 (12,070)	26,700 (12,110)
Attachment weight with 60" carriage	lb (kg)	1,475 (670)	1,571 (713)



The weight and load figure includes counterweight, air conditioner, enclosed ROPS cab, hydraulic coupler, 20.5-25-12PR (L-2) tires, full fuel tank and operator.

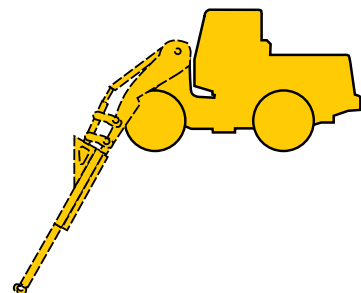
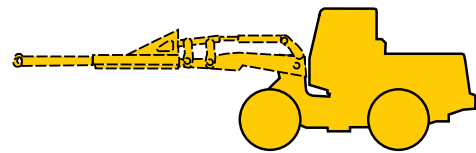
ATTACHMENT DATA



Extendable Boom

SPECIFICATIONS WITH EXTENDABLE BOOM					
Boom position			Retracted	Mid-Position	Extended
Operating load at 40° articulation		lb (kg)	4,000 (1,815)	3,395 (1,540)	2,930 (1,330)
Static tipping load*	Full 40° turn	lb (kg)	8,010 (3,635)	6,790 (3,080)	5,875 (2,665)
	Straight	lb (kg)	9,360 (4,245)	7,935 (3,600)	6,855 (3,110)
Operating weight*		lb (kg)	26,235 (11,900)	26,235 (11,900)	26,235 (11,900)
Attachment weight		lb (kg)	1,107 (502)	1,107 (502)	1,107 (502)

The weight and load figure includes counterweight, air conditioner, enclosed ROPS cab, hydraulic coupler, 20.5-25-12PR (L-2) tires, full fuel tank and operator.



EQUIPMENT DATA

STANDARD EQUIPMENT			
<p>Air Conditioner (R134 Refrigerant)</p> <p>Alarms (Audible): Brake Oil Pressure Engine Oil Pressure Hydraulic Oil Level Parking Brake with T/M Engaged</p> <p>Alarms (Visual): Air Filter Battery Discharge Brake Oil Pressure Central Warning Lamp Engine Coolant Temp Engine Oil Pressure Engine Warning Hydraulic Oil Level Parking Brake Torque Converter Oil Temperature Transmission Control Warning</p> <p>Alternator (50 amp)</p> <p>AM/FM CD Radio with AUX Input</p> <p>Batteries: 12V-630CCA (2 units)</p> <p>Boom Kickout (2-Position, Adjustable, In Cab)</p>	<p>Brake Line Protection (Front)</p> <p>Brake (Parking) Spring applied; Oil pressure released, Drum Type</p> <p>Brakes (Service) Enclosed Wet Disc, Dual System Full Hydraulic System</p> <p>Bucket Control Lever Single, Pilot Assisted</p> <p>Bucket/Fork Leveler</p> <p>Coat Hook</p> <p>Cold Start Aid</p> <p>Converter, 12V/15Amp w/dash outlet</p> <p>Cooling Fan, Automatic Reversible w/manual override</p> <p>Counterweight, Bucket</p> <p>Coupler, Hydraulic w/Lines & Control</p> <p>Cup Holder</p> <p>Downshift Button</p> <p>Drawbar</p> <p>Fenders (Full Width Front w/mudflaps, Rear)</p>	<p>Gauges: Converter Oil Temperature Engine Coolant Temp Fuel Level Hour Meter Hydraulic Oil Level, Sight Tachometer</p> <p>Heater/Pressurizer</p> <p>Hoodsides (Hinged)</p> <p>Horn (Electric)</p> <p>Indicators: Engine Pre-Heater High Beam Parking Brake Transmission Declutch Transmission Shift Monitor Working Light</p> <p>Linkage (Parallel, Sealed)</p> <p>Lights: 2 Headlights (Hi/Lo/Halogen) 4 Forward Working Lights 4 Rear Working Lights 2 Stop/Tail/Backup (LED)</p> <p>MODM (Machine Operation Diagnostic Module)</p> <p>Muffler</p> <p>Neutral Safety Start</p> <p>Operator's Manual Box</p>	<p>Radiator: Aluminum Fin Type Radiator Grille, Hinged Reverse Alarm</p> <p>ROPS Cab: Enclosed cab with sound suppression, front and rear wipers and washers, two rear view and two side mirrors, tinted glass, sliding side windows</p> <p>Safety Articulation Locking Bar</p> <p>Seat, Air Ride</p> <p>Seat Belt, Retractable, 3" wide</p> <p>Shift Control Unit for Automatic Shift</p> <p>Steering Wheel, Telescoping and Tilt</p> <p>Torque Proportioning Differentials</p> <p>Transmission Declutch Select/Adjustment Switch</p> <p>Vandalism Protection</p> <p>Wrist Rest, Adjustable</p>
OPTIONAL EQUIPMENT			
<p>Back-up Camera</p> <p>Bellyguard, Hinged Transmission</p> <p>Bolt-On Cutting Edge Segments</p> <p>Bucket Teeth</p> <p>Dual Lever Hydraulic Control</p>	<p>ELS (Efficient Loading System)</p> <p>Emergency Steering</p> <p>Engine Pre-Cleaner, Turbine</p> <p>Fenders, Extra-Wide, Front & Rear (hinged)</p> <p>F-R Direction Switch</p>	<p>HID Lighting (High Intensity Discharge)</p> <p>Hydraulic System, 3-Spool Valve</p> <p>Limited Slip Differentials</p> <p>Multi-Function Grip</p> <p>No-Spin Differentials</p>	<p>Quick Coupler Attachments</p> <p>Ride Control</p> <p>ROPS Canopy</p> <p>Skidder Tire Clearance Option</p> <p>Turn Signal With Four-Way Flasher</p>

KAWASAKI KEEPS IT SIMPLE.



Since 1962, Kawasaki has been listening to and learning from customers and dealers in the field. As a result, Kawasaki wheel loaders continue to evolve, with a constant focus on one thing — producing the most durable, most efficient, most dependable machines possible.

EASY TO OPERATE.

In a world of increasing demands, tighter deadlines, shrinking budgets and complicated contracts, better efficiency and greater productivity are a must. Innovative high-tech features on all Kawasaki wheel loaders allow the operator to adapt to the environment and the application right from the cab.

EASY TO MAINTAIN.

Diagnostic and operational modules monitor fluids and filters, and constantly provide information on everything from engine and transmission codes to location, hours, alarm sensors and machine performance data.

EASY TO DO BUSINESS WITH.

No run-arounds. No layers and layers of management. No distractions from competing product lines. Wheel loaders are our only business. Got a question? We'll get you an answer. Need a part? It's on its way. Quickly. Kawasaki offers flexible warranty programs, a state-of-the-art parts distribution system, an in-house rebuild center, and an experienced, knowledgeable support staff, focused on serving you.

The independent dealers that represent and support Kawasaki loaders are experts in their markets and are dedicated to providing you with the best service available.

Together, we are committed to making your investment in a Kawasaki loader a sound business decision that will pay dividends for years to come.

KAWASAKI. ONE FOCUS. COMPLETE SOLUTIONS.



KCM
KCMA Corporation

2140 Barrett Park Drive • Suite 101
Kennesaw, Georgia 30144
www.kawasakiloaders.com

Tel: 770-499-7000
Fax: 770-421-6842