



KAISER

Walking Mobile Excavator

S1



www.kaiser.li

7 tons of Performance

- Highest stability in any terrain
- Fast and sensitive Load-sensing control
- Drive system with 2 speed
- Increased fuel reservoir
- Powerful vent system
- Excellent service accessibility



Modern cabin
Comfortable and wide cabin, functional cockpit, excellent all-over view (ROPS-FOPS proofed)

Working relaxed and efficiently
User-friendly installation of controls and excellent view on instruments

Undercarriage
Robust undercarriage with additional fuel reservoir of approx. 58.7 us gal. (100 litres)

Telefuss
Continuously extendable telescopic legs of 850 mm (2.8 ft.)



Other accessories on demand



Grapple bucket for stones



Bucket



Ditching bucket with hydraulic tilt



Quick coupler "Blitz"



Hydraulic system
Fast and sensitive hydraulic due to Load-sensing system



Powerful vent system
Vent system for tropical climate warrants for a long lifetime of hydraulic components



Simplified maintenance
Optimised installation of components for easy access



Accessories
A wide range of accessories permits to equip the KAISER S1 for any application

Technical Data

Weight approx.	15.652,6 lb
Reach approx.	22' 9"
Digging depth approx.	15' 1"
Digging height approx.	26' 10"
Slewing radius	6' 10"
Lifting power: at 10,0 ft	8.377,5 lb
at 16,7 ft	3.527,4 lb
Tensile strength	43 kN
Break-out force	54 kN
Sound pressure level	Lpa 75 dB(A)
Sound intensity level	Lwa 99 dB(A)
Diesel reservoir	
incl. additional reservoir	58 gal

Engine

- 70 kW (95 HP) Perkins diesel engine
- Liquid cooling

Hydraulic system

- Hydraulic cylinder with hydraulic end position damping
- Control of the legs by joysticks
- Three separate hydraulic loops for excavator functions (164 l/min, 65 l/min and 51 l/min)

Vent system

- Large scale vent system with optimised air flow
- 4-circuit cooling system for hydraulic oil, cooling water, diesel fuel and air conditioning

Hydrostatic drive

- 2 speed
- Continuous drive speed from 0 – 4 km/h and 0 – 8 km/h (2.5/ 5 mph)

Slewing System

- Slewing 0 – 9 rpm
- Hydraulically vented wet disk brakes

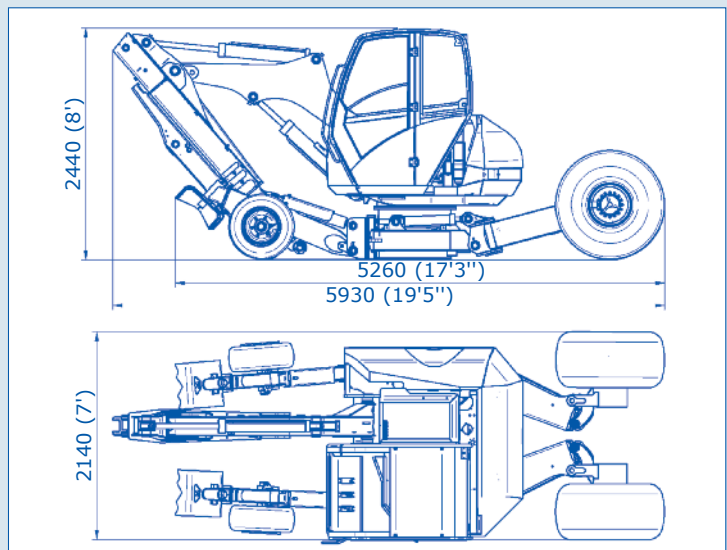
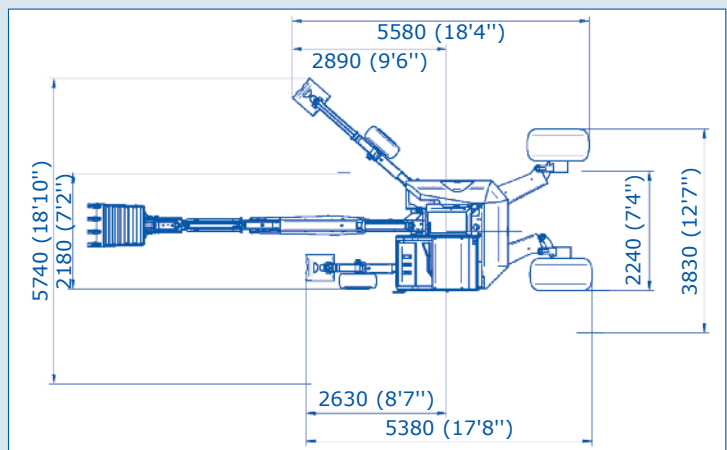
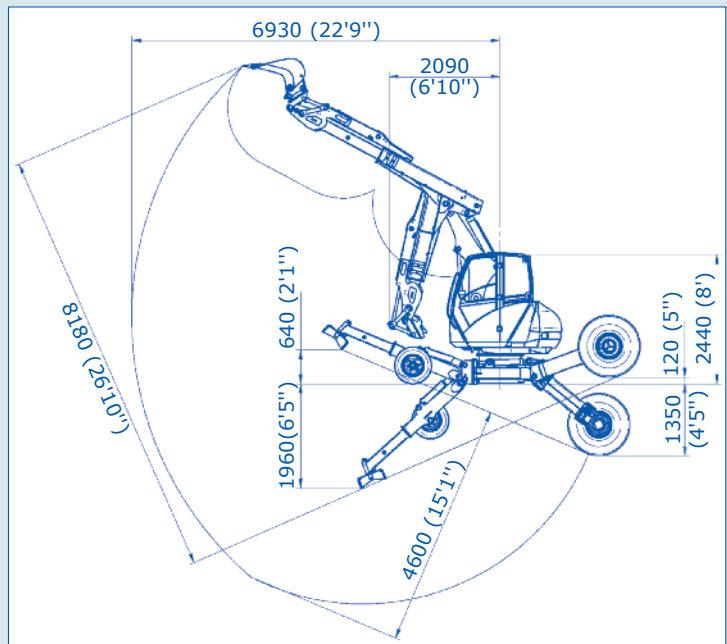
Cabin

- ROPS/FOPS proofed cab with excellent all-over view for highest operating safety
- Wide cab with multi-adjustable comfortable seat with air-suspension

Optional

- Hydraulic connection for grapple bucket
- Micro filtration / water absorption
- Winch (proportional)
- Air conditioning
- Particle filter system
- Auto-lubrication system

Dealer Stamp:



246012012/S1-5 Technical changes are possible without further notice!

www.kaiser.li

KAISER Aktiengesellschaft
Fahrzeugwerk
LI-9486 Schaanwald
Tel. +423-377 21 21
Fax +423-377 21 10
kaiserag@kaiser.li

KAISER Fahrzeugtechnik GmbH
A-6710 Nenzing

KAISER Eastern Europe s.r.o.
SK-922 02 Krakovany



KAISER