

# THE NEW **MX**-SERIES HYDREMA



*- the worlds  
most compact  
mobile excavators*





THE NEW  
**MX-SERIES**

HYDREMA

# HYDREMA'S NEW **MX**-SERIES OF COMPACT MOBILE EXCAVATORS

*The new MX series combines Hydrema's tradition with ultra compact excavators with the very latest technology.*

**The MX 14, MX16 and MX18 machines are all highly efficient diggers that are simply more compact than anything else on the market.**

**The new powerful 162 (170) hp Cummins stage 3b engine with a maintenance-free catalytic converter and the advanced electronically controlled hydraulic ensures that the machine is ready to tackle all the different jobs and tools that are needed during the working day.**

**The all-new ROPS cabin is one of the biggest on the market. Low noise level, high comfort and simple operation using display and keypads ensure an efficient and pleasant working day.**

**Reliability and easy service have been the key points in its development. For example, the large bonnet opens electrically and provides full access for maintenance and service.**

**You can really look forward to getting to know the new 14-18 tonne machines from Hydrema.**

**THE NEW  
MX-SERIES**

## NEW FEATURES:

### GENERAL CHARACTERISTICS OF ALL MODELS

Cummins QSB 4.5L stage 3B engine 162 (170) hp – superior engine power – brand-new modern environmental engine

ZF heavy-duty axles – latest axle design with brakes directly by the wheels – optimal digging brake

ZF two-step soft-shift transmission – comfortable gearshift “on the fly” – up to 38 km/h speed

Double-circuit brake system – safety and comfort

Extremely compact upper carriage with radiator on right side – minimal noise in front of the machine

Upper carriage with the market’s absolute shortest turning radius – works efficiently in all spatial conditions

Electronically controlled double-circuit hydraulic system – effective adjustment of the hydraulic power for any task

Hydrostatic high-pressure system for the turning function – unmatched turning precision, low fuel consumption

Electric adjustment of supplementary hydraulics from instrument panel – fast adjustment of flow and pressure for all tools

Electric opening of the bonnet – easy and comfortable access for service and maintenance

Large bonnet on the side of the machine – easy service and maintenance from ground level and not on top of the machine

Optimised digger with high speed and strong breakout forces – the market’s most productive compact machine

Strongest lifting power for compact diggers – compact machine that lifts like a standard digger

Hose-burst valves on boom and dipper – 100% equipped for lifting tasks

Robust dozer blade with self-levelling

Very robust stabilisers

The machine is fully prepared for mounting and controlling of tilt rotator

One of the market’s largest ROPS cabs – safe and comfortable operator space with optimal visibility

New can-bus controlled operating system with keypads – easy and intelligent operation

Intelligent instrument panel with diagnosis – quick service and fault detection

Efficient air conditioner – comfort and safety

**THE NEW  
MX-SERIES**

# CUMMINS QSB 4,5 STAGE 3B/TIER 4 INTERIM ENGINE:

ELECTRONICALLY  
VARIABLE  
TURBO CHARGER

EGR VALVE

CLOSED BREATHING  
SYSTEM

Cleaning of exhaust  
fumes with DOC and  
catalytic converter

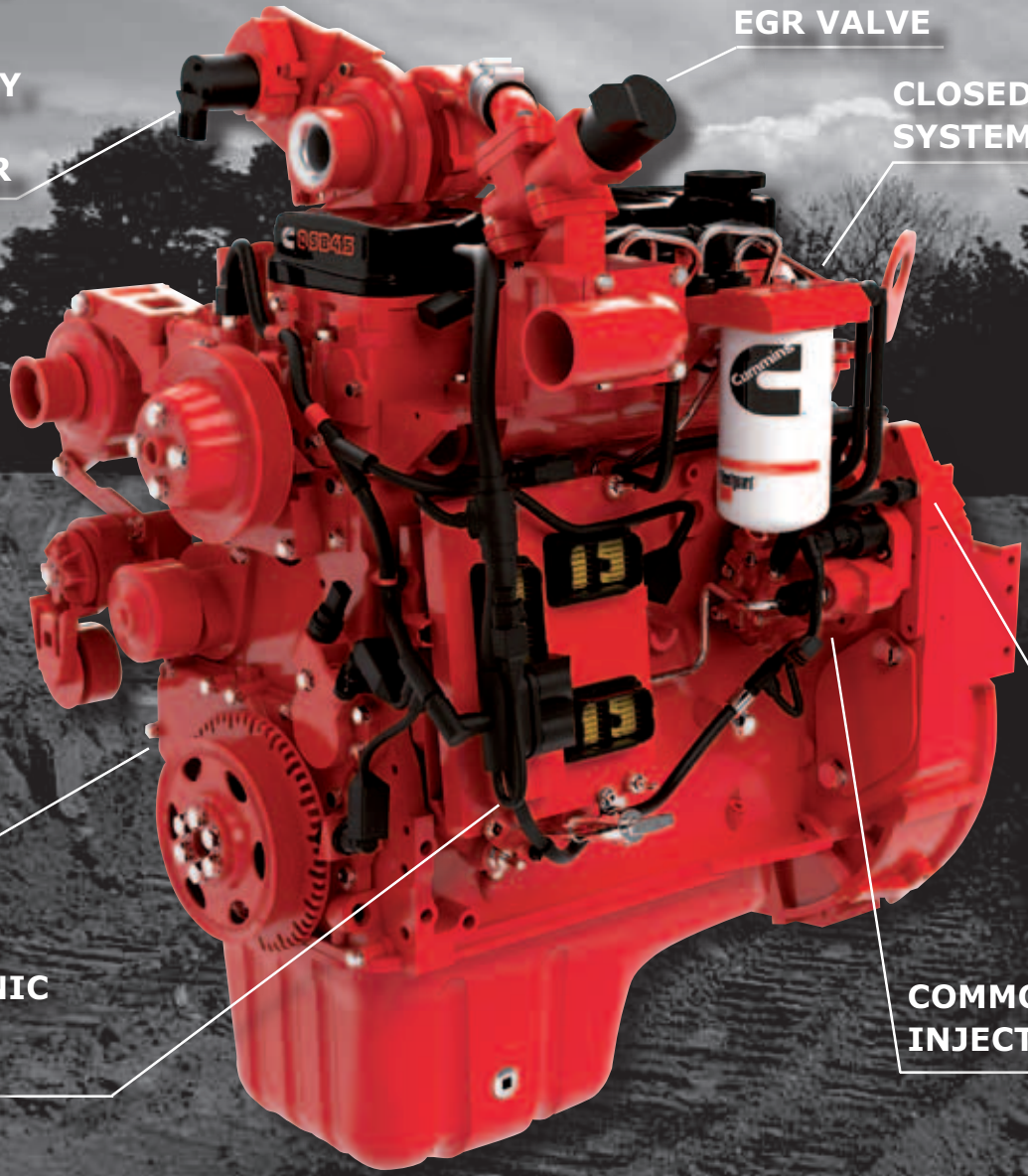
*- 92% reduction  
of soot particles*

EGR  
COOLER

TRANSFER  
GEAR BOX

ELECTRONIC  
ENGINE  
CONTROL

COMMON RAIL  
INJECTION PUMP



## TECHNICAL DATA:

### **Excavator:**

Compact excavator with 2 piece boom for all machines. Dipper 2.0m , 2.5m, 3.0m possible. Free choice of different undercarriage variants: Dozer blade front/rear, Dozer blade front/ rear in combination with stabilizers front / rear. (A1= Dozer blade, A3=Dozer blade + stabilizers). Hydraulic quick hitch and Roto-tilt as option. Roto-tilt control integrated in dash board.

### **Hydraulic system:**

Dual circuit with load sensing and high pressure hydrostatic slew system. Mode-Control and ECO-Mode. Up to 3 hydraulic options. Option 3 with priority

### **Axles:**

ZF axles with planetary hub reduction. Oil immersed brakes in all hubs for optimal digging brake. Front axle with center bolt and pendel lock.

### **Steering:**

Hydraulic steering with emergency steering. Joystick steering as option.

### **Transmission:**

ZF 2-speed powershift transmission with electronic shift system.

### **Brakes:**

Dual circuit system with oil immersed brakes all wheels. Parking brake integrated in transmission.

### **Engine:**

Cummins QSB 4.5 Stage 3b / 4 interim engine, with DOC Catalyst. Max. 119kW/162 Hp. Engine torque 624 Nm. Hydrostatic controlled variable fan.

### **Control:**

Joysticks with 4 proportional functions, 2 rollers and 4 pushbuttons. Optional hydraulics controlled by rollers. Stabilizers controlled with foot pedals independent from other functions. Pressure and flow for optional hydraulics can be electronically controlled from the dash board. 10 different adjustments can be stored. Joysticks with 4 rollers and 5 pushbuttons as option.

### **Cab:**

Very spacious ROPS cab with slide window, roof window, adjustable steering column and arm rests. Air condition with 7 adjustable air nozzles. Function adjustments can be stored over CAN BUS keypads or over the dash board. Very big rear view mirrors with electrical adjustment. Storage compartments under or behind the seat. Air suspended seat as option. 14,5 Litre. Cooling box as option. FOPS for roof and cab front as option.

**THE NEW  
MX-SERIES**

## DIMENSIONS:

	<b>MX14</b>	<b>MX16</b>	<b>MX18</b>
Machine weight A1 / A3 .....	14,7 / 16,1	16,1 / 17,5	17,9 / 19,3
Width over tyres.....	2550	2550	2550
Slew radius rear .....	1550	1640	1700
<b>ENGINE:</b>			
Type .....	Cummins QSB	Cummins QSB	Cummins QSB
Power.....	119/162	119/162	19/162
Emission.....	Stage 3b	Stage 3b	Stage 3b
Cylinder.....	4	4	4
Torque at 1500 rpm.....	624	624	624
Fuel tank .....	380	380	380
<b>TRANSMISSION</b>			
Gearbox.....	ZF 2 speed	ZF 2 speed	ZF 2 speed
Transport gear .....	38	38	35
Offroad gear .....	0-10	0-10	0-9
Creep gear .....	0-3.5	0-3.5	0-3
<b>AXLES:</b>			
Front axle.....	ZF Steering axle	ZF Steering axle	ZF Steering axle
Rear axle.....	ZF Rigid axle	ZF Rigid axle	ZF Rigid axle
<b>SLEW SYSTEM</b>			
Rotation speed .....	11.3	11.3	11.3
Slew torque.....	50	50	50
<b>EXCAVATOR (specs with 2.5m dipper)</b>			
Reach .....	9160	9160	9730
Digging depth.....	5280	5280	5850
Max. Cutting height .....	10610	10610	11170
Break out force bucket .....	110	110	143
Break out force dipper .....	79	79	97
Lift capacity at 6m reach .....	5000	5500	6500
<b>HYDRAULICS</b>			
System .....	Dual circuit	Dual circuit	Dual circuit
Oil flow main pump / slew pump .....	319/88	319/88	319/88
Max. Oil flow .....	407	407	407
Pressure main pump / slew pump .....	350/405	350/405	350/405
Hydraulic option 1 .....	0-200	0-200	0-200
Hydraulic option 2 .....	0-90	0-90	0-90
Hydraulic option 3 .....	100-200	100-200	100-200

**THE NEW  
MX-SERIES**

# LOAD FOR LIFTING WORK: **MX14**

Lifting capacity for MX14 with A1-stabilization (dozerblade), L2,5 dipper, 500 kg bucket (Reach in Meter)

H	3.0			4.0			5.0			6.0			7.0			8.0			Max.			
	AQ	F	AL	AQ	F	AL	AQ	F	AL	AQ	F	AL	AQ	F	AL	AQ	F	AL	AQ	F	AL	
9.0	5.9*	5.9*	5.9*																			
8.0	5.0*	5.0*	5.0*	4.1	3.7	5.1*	2.6	2.3	4.6*													
7.0	4.2*	4.2*	4.2*	4.2	3.8	4.6*	2.7	2.4	4.7*	1.8	1.5	4.0*										
6.0	3.8*	3.8*	3.8*	4.2	3.7	4.4*	2.7	2.4	4.7*	1.8	1.6	4.0*	1.2	1.0	3.4*							
5.0	4.0*	4.0*	4.0*	4.1	3.6	4.7*	2.6	2.3	4.9*	1.8	1.5	4.1*	1.2	1.0	3.4*							
4.0	6.8*	6.0	6.8*	3.8	3.4	6.8*	2.5	2.2	5.3*	1.7	1.5	4.2*	1.2	1.0	3.5*							
3.0	6.5	5.7	8.9*	3.7	3.2	8.4*	2.3	2.0	5.7*	1.6	1.4	4.5*	1.1	0.9	3.7*	0.8	0.6	2.9				
2.0	6.3	5.5	9.2*	3.3	2.9	10.0*	2.1	1.8	6.4*	1.5	1.3	4.8*	1.1	0.9	3.8	0.7	0.6	2.9	0.6	0.5	2.7	
1.0	5.2	4.4	7.7*	3.1	2.6	11.3	2.0	1.7	6.9	1.4	1.2	4.9	1.0	0.8	3.7	0.7	0.6	2.9				
0.0	4.9	4.2	8.0*	2.7	2.3	8.7*	1.9	1.6	6.8	1.3	1.1	4.8	1.0	0.8	3.6	0.7	0.5	2.9				
-1.0	4.6	3.9	6.9*	2.7	2.3	10.5*	1.8	1.5	6.7	1.3	1.1	4.8	1.0	0.8	3.6							
-2.0	4.6	3.9	9.9*	2.7	2.3	9.1*	1.8	1.5	6.7	1.3	1.1	4.8	1.0	0.8	3.6							
-3.0	4.8	4.1	12.0	2.9	2.4	9.7*	1.9	1.6	6.9	1.4	1.2	4.9										
-4.0	5.1	4.4	12.0	3.1	2.7	9.4*																

Lifting capacity for MX14 with A3-stabilization (dozerblade + stabilizers), L2,5 dipper, 500 kg bucket (Reach in Meter)

H	3.0			4.0			5.0			6.0			7.0			8.0			Max.			
	AQ	F	AL	AQ	F	AL	AQ	F	AL	AQ	F	AL	AQ	F	AL	AQ	F	AL	AQ	F	AL	
9.0	5.9*	5.9*	5.9*																			
8.0	5.0*	5.0*	5.0*	5.1*	4.0	5.1*	4.6*	2.5	4.6*													
7.0	4.2*	4.2*	4.2*	4.6*	4.1	4.6*	4.7*	2.6	4.7*	3.3	1.7	4.0*										
6.0	3.8*	3.8*	3.8*	4.4*	4.0	4.4*	4.7*	2.6	4.7*	3.4	1.7	4.0*	2.4	1.1	3.4*							
5.0	4.0*	4.0*	4.0*	4.7*	3.9	4.7*	4.7	2.5	4.9*	3.3	1.7	4.1*	2.4	1.2	3.4*							
4.0	6.8*	6.4	6.8*	6.8*	3.6	6.8*	4.6	2.4	5.3*	3.3	1.7	4.2*	2.4	1.1	3.5*							
3.0	8.9*	6.2	8.9*	6.8	3.5	8.4*	4.4	2.2	5.7*	3.2	1.6	4.5*	2.3	1.1	3.7*	1.8	0.7	3.0				
2.0	9.2*	5.9	9.2*	6.4	3.2	10.0*	4.2	2.1	6.4*	3.0	1.5	4.8*	2.3	1.0	3.8*	1.7	0.7	3.0	1.6	0.6	2.8	
1.0	7.7*	4.9	7.7*	6.1	2.9	11.0	4.0	1.9	7.0	2.9	1.4	5.0	2.2	1.0	3.8	1.7	0.7	3.0				
0.0	8.0*	4.6	8.0*	5.7	2.6	8.7*	3.9	1.8	6.8	2.9	1.3	4.9	2.2	0.9	3.8	1.7	0.7	3.0				
-1.0	6.9*	4.3	6.9*	5.6	2.6	10.5*	3.8	1.8	6.8	2.8	1.3	4.9	2.2	0.9	3.7							
-2.0	9.9*	4.4	9.9*	5.7	2.6	9.1*	3.8	1.8	6.8	2.8	1.3	4.9	2.2	0.9	3.8							
-3.0	10.2	4.5	12.0	5.8	2.7	9.7*	3.9	1.9	6.9	2.9	1.3	5.0										
-4.0	10.7	4.8	12.0	6.1	2.9	9.4*																

The stability is according to ISO 10567 (75% tipping load or 87% hydraulic lift capacity). The values with (\*) are limited by hydraulic lifting capacity. All values are in tonnes

The excavators stabilizing is: - F: Without any stabilization 360° slew range. - AQ: Stabilized 360° slew range. - AL: Stabilized with load over stabilizer. Only 30° slew from longitudinal direction allowed.

# THE NEW MX-SERIES



# LOAD FOR LIFTING WORK: MX16

Lifting capacity MX16 with A1-stabilization (dozerblade), L2,5 dipper, 500 kg bucket (Reach in Meter)

H	3.0			4.0			5.0			6.0			7.0			8.0			Max.			
	AQ	F	AL	AQ	F	AL	AQ	F	AL	AQ	F	AL	AQ	F	AL	AQ	F	AL	AQ	F	AL	
9.0	5.9*	5.9*	5.9*																			
8.0	5.0*	5.0*	5.0*	5.1	4.6	5.1*	3.3	2.9	4.6*													
7.0	4.2*	4.2*	4.2*	4.6*	4.6*	4.6*	3.4	3.1	4.7*	2.3	2.1	4.0*										
6.0	3.8*	3.8*	3.8*	4.4*	4.4*	4.4*	3.4	3.1	4.7*	2.4	2.1	4.0*	1.6	1.4	3.4*							
5.0	4.0*	4.0*	4.0*	4.7*	4.5	4.7*	3.3	3.0	4.9*	2.3	2.1	4.1*	1.7	1.5	3.4*							
4.0	6.8*	6.8*	6.8*	4.8	4.2	6.8*	3.2	2.9	5.3*	2.3	2.0	4.2*	1.6	1.4	3.5*							
3.0	7.9	7.1	8.9*	4.6	4.1	8.4*	3.0	2.7	5.7*	2.2	1.9	4.5*	1.6	1.4	3.7*	1.2	1.0	3.1*				
2.0	7.7	6.8	9.2*	4.3	3.8	10.0*	2.8	2.5	6.4*	2.1	1.8	4.8*	1.5	1.3	3.8*	1.1	1.0	3.2*	1.0	0.9	3.0*	
1.0	6.6	5.8	7.7*	4.0	3.5	11.3*	2.7	2.4	7.0*	2.0	1.7	5.1*	1.5	1.3	4.0*	1.1	0.9	3.3*				
0.0	6.3	5.5	8.0*	3.7	3.2	8.7*	2.6	2.2	7.7*	1.9	1.7	5.5*	1.4	1.2	4.2*	1.1	0.9	3.4*				
-1.0	6.0	5.2	6.9*	3.6	3.2	10.5*	2.5	2.2	8.1	1.9	1.6	5.7*	1.4	1.2	4.3*							
-2.0	6.1	5.3	9.9*	3.7	3.2	9.1*	2.5	2.2	7.5*	1.9	1.6	5.8	1.4	1.2	4.4							
-3.0	6.2	5.4	12.0	3.8	3.3	9.7*	2.6	2.3	7.7*	2.0	1.7	5.9*										
-4.0	6.5	5.7	12.0	4.0	3.5	9.4*																

Lifting capacity MX16 with A3-stabilization (dozerblade + stabilizers), L2,5 dipper, 500 kg bucket (Reach in Meter)

H	3.0			4.0			5.0			6.0			7.0			8.0			Max.			
	AQ	F	AL	AQ	F	AL	AQ	F	AL	AQ	F	AL	AQ	F	AL	AQ	F	AL	AQ	F	AL	
9.0	5.9*	5.9*	5.9*																			
8.0	5.0*	5.0*	5.0*	5.1*	4.8	5.1*	4.6*	3.1	4.6*													
7.0	4.2*	4.2*	4.2*	4.6*	4.6*	4.6*	4.7*	3.3	4.7*	4.0*	2.2	4.0*										
6.0	3.8*	3.8*	3.8*	4.4*	4.4*	4.4*	4.7*	3.3	4.7*	4.0*	2.3	4.0*	3.0	1.6	3.4*							
5.0	4.0*	4.0*	4.0*	4.7*	4.7*	4.7*	4.9*	3.2	4.9*	4.0	2.3	4.1*	3.0	1.6	3.4*							
4.0	6.8*	6.8*	6.8*	6.8*	4.5	6.8*	5.3*	3.1	5.3*	4.0	2.2	4.2*	3.0	1.6	3.5*							
3.0	8.9*	7.5	8.9*	8.1	4.4	8.4*	5.3	2.9	5.7*	3.9	2.1	4.5*	2.9	1.5	3.7*	2.3	1.1	3.1*				
2.0	9.2*	7.2	9.2*	7.7	4.1	10.0*	5.1	2.7	6.4*	3.7	2.0	4.8*	2.9	1.5	3.8*	2.2	1.1	3.2*	2.1	1.0	3.0*	
1.0	7.7*	6.2	7.7*	7.3	3.8	11.3*	4.9	2.6	7.0*	3.6	1.9	5.1*	2.8	1.4	4.0*	2.2	1.1	3.3*				
0.0	8.0*	5.9	8.0*	7.0	3.5	8.7*	4.8	2.5	7.7*	3.6	1.8	5.5*	2.8	1.4	4.2*	2.2	1.0	3.4*				
-1.0	6.9*	5.6	6.9*	6.9	3.4	10.5*	4.7	2.4	8.0	3.5	1.8	5.7*	2.7	1.4	4.3*							
-2.0	9.9*	5.7	9.9*	6.9	3.5	9.1*	4.7	2.4	7.5*	3.5	1.8	5.8	2.8	1.4	4.5*							
-3.0	12.0	5.8	12.0	7.1	3.6	9.7*	4.9	2.5	7.7*	3.6	1.9	5.9*										
-4.0	12.0	6.1	12.0	7.4	3.8	9.4*																

The stability is according to ISO 10567 (75% tipping load or 87% hydraulic lift capacity). The values with (\*) are limited by hydraulic lifting capacity. All values are in tonnes

The Excavator stabilizing is: - F: Without any stabilization 360° slew range. - AQ: Stabilized 360° slew range. - AL: Stabilized with load over stabilizer. Only 30° slew from longitudinal direction allowed.

# THE NEW MX-SERIES

# LOAD FOR LIFTING WORK: **MX18**

Lifting capacity MX18 with A1-stabilization (dozerblade), L2,5 dipper, 500 kg bucket (Reach in Meter)

H	3.0			4.0			5.0			6.0			7.0			8.0			Max.			
	AQ	F	AL	AQ	F	AL	AQ	F	AL	AQ	F	AL	AQ	F	AL	AQ	F	AL	AQ	F	AL	
9.0	7.3*	7.3*	7.3*	5.8	5.2	6.7*																
8.0	6.3*	6.3*	6.3*	6.0	5.4	6.5*	4.0	3.6	6.3*													
7.0	5.5*	5.5*	5.5*	6.0*	5.5	6.0*	4.0	3.6	6.2*	2.8	2.5	5.4*										
6.0	5.2*	5.2*	5.2*	5.9	5.3	6.0*	4.0	3.6	6.4*	2.8	2.5	5.4*	2.0	1.8	4.7*							
5.0	6.2*	6.2*	6.2*	5.6	5.1	7.0*	3.8	3.4	6.7*	2.7	2.4	5.6*	2.0	1.7	4.7*	1.4	1.2	3.9*				
4.0	9.0	8.0	9.3*	5.2	4.7	9.2*	3.6	3.2	7.2*	2.6	2.3	5.8*	1.9	1.7	4.8*	1.4	1.2	4.1				
3.0	8.5	7.6	9.3*	4.7	4.2	10.4*	3.3	2.9	7.8*	2.4	2.1	6.1*	1.8	1.6	5.0*	1.4	1.2	4.1				
2.0	7.5	6.6	8.8*	4.6	4.0	10.1*	3.1	2.7	8.5*	2.3	2.0	6.5*	1.7	1.5	5.1	1.3	1.1	4.0	1.1	0.9	3.4	
1.0	6.6*	6.0	6.6*	4.0	3.4	7.2*	2.9	2.5	8.7*	2.2	1.9	6.5	1.6	1.4	5.0	1.3	1.1	4.0				
0.0	4.7*	4.7*	4.7*	3.8	3.3	8.0*	2.7	2.4	8.5*	2.1	1.8	6.4	1.6	1.4	4.9	1.2	1.0	3.9				
-1.0	6.4	5.5	7.4*	3.8	3.3	9.7*	2.7	2.3	8.0*	2.0	1.7	6.3	1.6	1.3	4.9	1.2	1.0	3.9				
-2.0	6.5	5.6	10.7*	3.9	3.4	8.4*	2.7	2.3	7.1*	2.0	1.7	5.9*	1.6	1.3	4.7*							
-3.0	6.6	5.7	11.9*	4.1	3.5	9.4*	2.8	2.5	7.6*	2.1	1.9	6.1*										
-4.0	7.0	6.1	12.0	4.3	3.8	9.7*	3.1	2.7	7.4*													

Lifting capacity MX18 with A3-stabilization (dozerblade + stabilizers), L2,5 dipper, 500 kg bucket (Reach in Meter)

H	3.0			4.0			5.0			6.0			7.0			8.0			Max.			
	AQ	F	AL	AQ	F	AL	AQ	F	AL	AQ	F	AL	AQ	F	AL	AQ	F	AL	AQ	F	AL	
9.0	7.3*	7.3*	7.3*	6.7*	5.5	6.7*																
8.0	6.3*	6.3*	6.3*	6.5*	5.7	6.5*	6.3*	3.8	6.3*													
7.0	5.5*	5.5*	5.5*	6.0*	5.7	6.0*	6.2*	3.8	6.2*	4.7	2.7	5.4*										
6.0	5.2*	5.2*	5.2*	6.0*	5.6	6.0*	6.4*	3.8	6.4*	4.6	2.7	5.4*	3.5	1.9	4.7*							
5.0	6.2*	6.2*	6.2*	7.0*	5.4	7.0*	6.3	3.6	6.7*	4.6	2.6	5.6*	3.4	1.9	4.7*	2.6	1.3	3.9*				
4.0	9.3*	8.4	9.3*	9.0	5.0	9.2*	6.1	3.4	7.2*	4.4	2.5	5.8*	3.4	1.8	4.8*	2.6	1.3	4.1*				
3.0	9.3*	8.0	9.3*	8.4	4.4	10.4*	5.8	3.2	7.8*	4.3	2.3	6.1*	3.3	1.7	5.0*	2.6	1.3	4.1				
2.0	8.8*	7.0	8.8*	8.2	4.3	10.1*	5.5	2.9	8.5*	4.1	2.2	6.5*	3.2	1.6	5.1	2.5	1.2	4.1	2.1	1.0	3.5	
1.0	6.6*	6.4	6.6*	7.2*	3.7	7.2*	5.3	2.7	8.7*	4.0	2.0	6.5	3.1	1.6	5.0	2.5	1.2	4.0				
0.0	4.7*	4.7*	4.7*	7.4	3.6	8.0*	5.1	2.6	8.5*	3.9	2.0	6.3	3.0	1.5	4.9	2.4	1.2	4.0				
-1.0	7.4*	5.9	7.4*	7.3	3.6	9.7*	5.1	2.5	8.0*	3.8	1.9	6.3	3.0	1.5	4.9	2.4	1.2	4.0				
-2.0	10.7*	6.0	10.7*	7.4	3.6	8.4*	5.1	2.6	7.1*	3.8	1.9	5.9*	3.0	1.5	4.7*							
-3.0	11.9*	6.2	11.9*	7.6	3.8	9.4*	5.2	2.7	7.6*	3.9	2.0	6.1*										
-4.0	12.0	6.5	12.0	8.0	4.1	9.7*	5.5	2.9	7.4*													

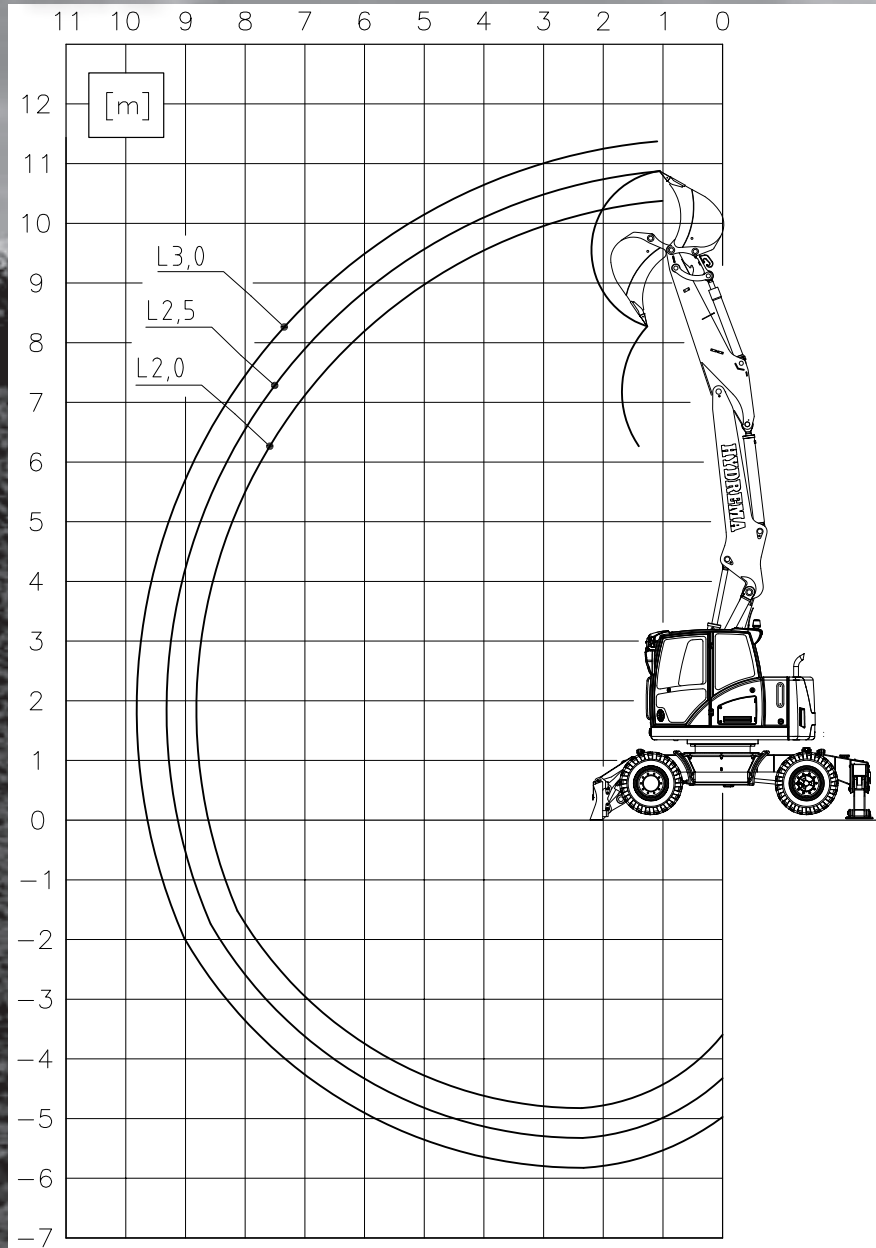
The stability is according to ISO 10567 (75% tipping load or 87% hydraulic lift capacity). The values with (\*) are limited by hydraulic lifting capacity. All values are in tonnes

The Excavator stabilizing is: - F: Without any stabilizer 360° slew range. - AQ: Stabilized 360° slew range. - AL: Stabilized with load over stabilizer. Only 30° slew from longitudinal direction allowed.

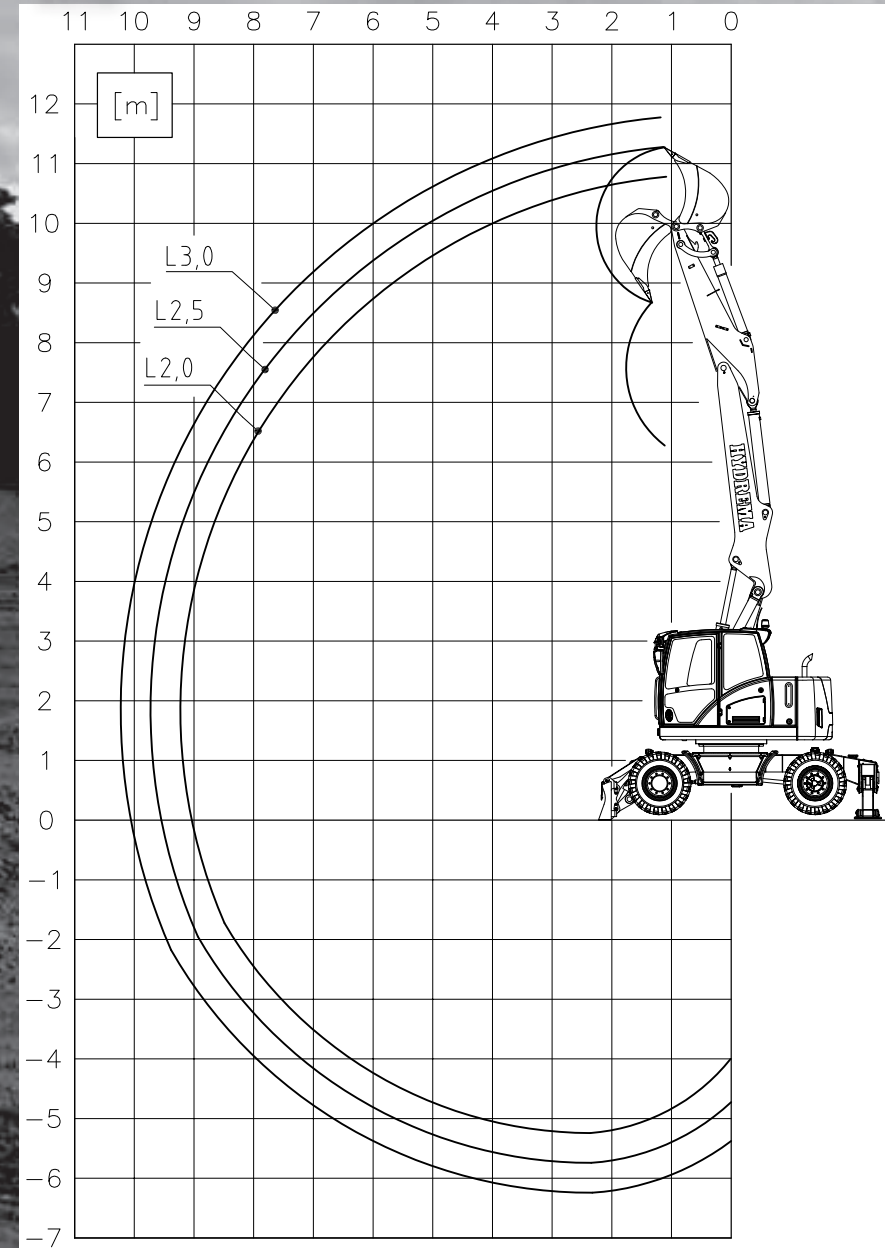
# THE NEW MX-SERIES

# DIGGING DIAGRAM WITH BUCKET:

**MX14-16:**



**MX18:**





# THE NEW MX-SERIES

## **SALES & SERVICE:**

*DENMARK: A/S HYDREMA Danmark. Gl. Kirkevej 16. DK-9530 Støvring. Tel.: +45 98 37 13 33*

*SWEDEN: HYDREMA AB. Hjalmar Petris Väg 44. SE-352 46. Tel.: +46 470 200 70*

*NORWAY: HYDREMA AS. Bergermoen. NO-3520 Jevnaker. Tel.: +47 613 140 11*

*GERMANY: HYDREMA Baumaschinen GmbH. Kromsdorfer Straße 18. DE-99427 Weimar. Tel.: +49 363 461 400*

*UNITED KINGDOM: HYDREMA UK Ltd. Barugh Way, Melmerby Green Road. UK-Ripon HG4 5NB. Tel.: +44 17 65 64 19 40*

*USA: HYDREMA US INC. 985 Union Hill Road. Alpharette, GA 30004. Tel. toll Free: +1 (877) 4 493736*

*A/S HYDREMA EXPORT. Gl. Kirkevej 16. DK-9530 Støvring. Tel.: +45 98 37 13 33*

**www.hydrema.com**  
hydrema@hydrema.com