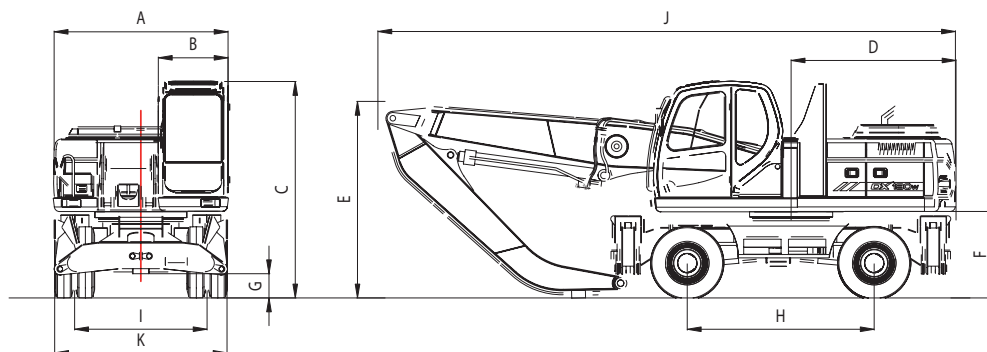




# DX190w - DX210w Material Handling | Wheeled Excavator



# Dimensions & working ranges



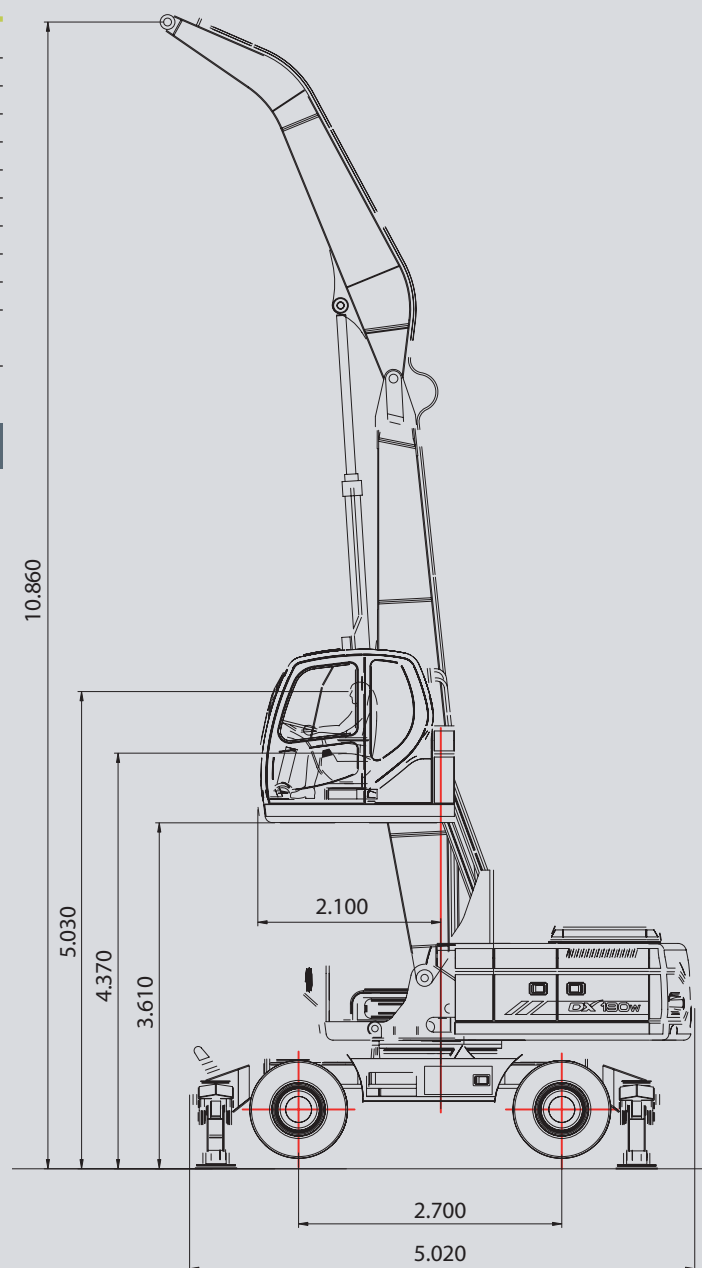
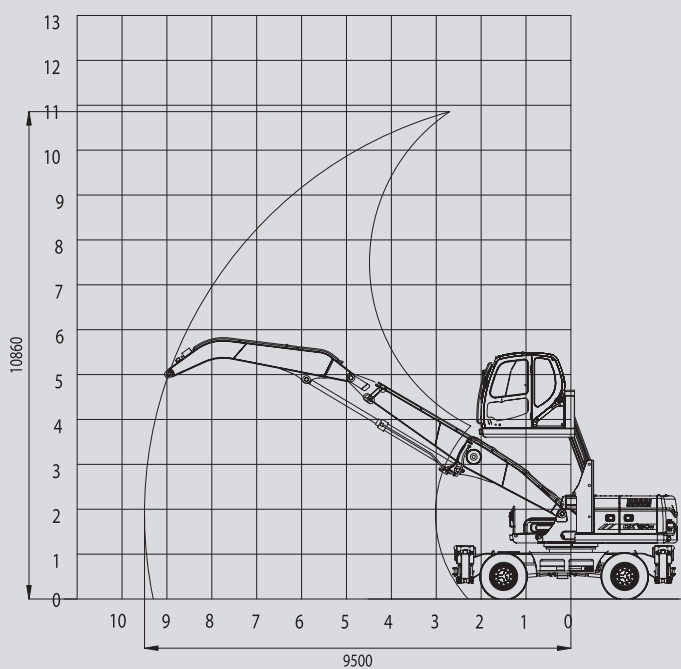
**DX190W**  
MATERIAL HANDLING

Dimensions – Boom: 5,6 m - Arm: 4 m - Counter weight: 3.600 kg

## \* Dimensions

A	Overall width of upper structure	mm	2.494
B	Overall width of cab	mm	1.010
C	Overall height of cab	mm	3.135
D	Tail swing radius	mm	2.450
E	Overall height of boom	mm	2.870
F	Clearance under counterweight	mm	1.249
G	Ground clearance	mm	350
H	Wheel base	mm	2.700
I	Tread	mm	1.944
J	Overall length	mm	8.350
K	Overall tire width with fender	mm	2.496
	Solid Tires 10.00-20-14PR		

## Working ranges



# Lifting capacity



## Standard configuration

DX190W MH – Boom: 5.600 mm - Arm: 4.060 mm - Weight: 19.320 kg - Shoe: 600 mm

Units: 1.000 kg

A (m) B (m)	2		3		4		5		6		7		8		9		Max. lift		A(m)
	⬇️	⬅️	⬇️	⬅️	⬇️	⬅️	⬇️	⬅️	⬇️	⬅️	⬇️	⬅️	⬇️	⬅️	⬇️	⬅️	⬇️	⬅️	
11			*6,30	*6,30													*5,43	*5,43	3,20
10					*6,54	*6,54	*5,27	*5,27									*3,90	*3,90	5,31
9							*6,05	*6,05	*5,44	*5,44							*3,37	*3,37	6,63
8							*5,75	*5,75	*5,81	*5,81	*5,18	*5,18					*3,10	*3,10	7,58
7							*5,46	*5,46	*5,75	*5,75	*5,71	*5,71	*4,51	*4,51			*2,93	*2,93	8,31
6							*5,36	*5,36	*5,77	*5,77	*5,82	5,73	*5,44	4,68			*2,83	*2,83	8,86
5				*4,92	*4,92	*5,60	*5,60	*6,05	*6,05	*5,93	5,67	*5,47	4,65	*4,36	3,90		*2,77	*2,77	9,26
4			*5,94	*5,94	*6,50	*6,50	*6,78	*6,78	*6,10	5,58	*5,54	4,60	*5,03	3,88			*2,75	*2,75	9,54
3							*8,28	*8,28	*7,11	6,85	*6,27	5,48	*5,61	4,54	*5,01	3,85	*2,75	*2,75	9,71
2							*8,78	8,75	*7,39	6,67	*6,41	5,37	*5,64	4,47	*4,96	3,82	*2,77	*2,77	9,78
1							*9,05	8,49	*7,53	6,51	*6,44	5,27	*5,59	4,41	*4,81	3,78	*2,82	*2,82	9,73
0					*11,22	*11,22	*8,99	8,30	*7,45	6,39	*6,33	5,19	*5,41	4,36	*4,52	3,76	*2,91	*2,91	9,59
-1			*8,94	*8,94	*10,48	*10,48	*8,55	8,20	*7,12	6,32	*6,01	5,14	*5,05	4,33	*3,97	3,76	*3,03	*3,03	9,33
-2	*7,76	*7,76	*11,13	*11,13	*9,27	*9,27	*7,73	*7,73	*6,48	6,29	*5,42	5,12	*4,40	4,33			*2,90	*2,90	8,95
-3			*8,74	*8,74	*7,63	*7,63	*6,52	*6,52	*5,48	*5,48	*4,48	*4,48	*3,28	*3,28			*2,45	*2,45	8,39
-4					*5,53	*5,53	*4,86	*4,86	*4,03	*4,03	*2,99	*2,99					*2,89	*2,89	7,08

1. The nominal forces are based on the SAE J1097 standard.

2. The load point is the hook at the rear of the bucket.

3. \* = The nominal loads are based on hydraulic capacity.

4. The nominal loads do not exceed 87% of the hydraulic capacity or 75% of the capacity of the swing.

⬇️ : Nominal force

⬅️ : Nominal force at the side or 360°



# Lifting capacity



## Standard configuration

DX210W MH – Boom: 6,500 mm - Arm: 4,500 mm - Weight: 23,440 kg - Shoe: 600 mm

Units: 1.000 kg

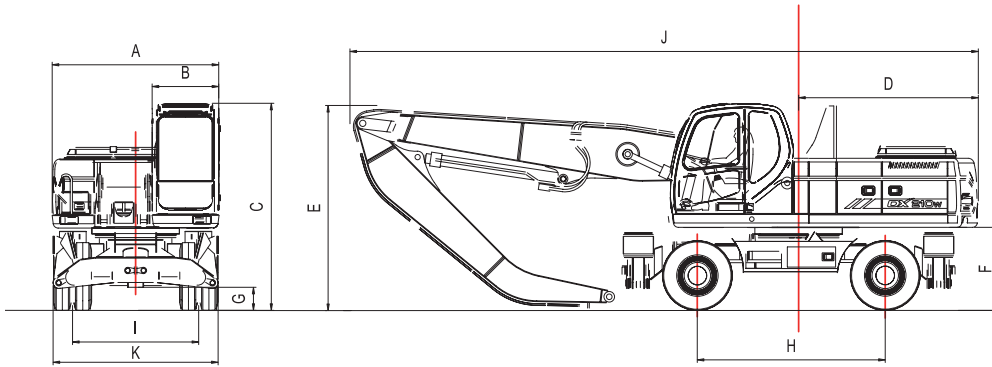
A(m) B(m)	2		3		4		5		6		7		8		9		10		Max. lift				
	☺	☹	☺	☹	☺	☹	☺	☹	☺	☹	☺	☹	☺	☹	☺	☹	☺	☹	☺	☹	A(m)		
12																					*8,55	*8,55	3,85
11							*6,71	*6,71													*6,34	*6,34	5,89
10							*6,23	*6,23	*5,81	*5,81	*5,53	*5,53									*5,49	*5,49	7,23
9									*5,60	*5,60	*5,29	*5,29	*5,06	*5,06							*5,02	*5,02	8,23
8									*5,56	*5,56	*5,23	*5,23	*4,94	*4,94	*4,71	4,55					*4,71	4,54	9,01
7							*6,13	*6,13	*5,66	*5,66	*5,27	*5,27	*4,94	*4,94	*4,65	4,56					*4,48	4,11	9,62
6							*6,48	*6,48	*5,89	*5,89	*5,41	*5,41	*5,01	*5,01	*4,66	4,55	*4,33	3,86			*4,30	3,81	10,09
5					*8,08	*8,08	*7,00	*7,00	*6,21	*6,21	*5,61	*5,61	*5,12	*5,12	*4,71	4,51	*4,33	3,85			*4,14	3,60	10,45
4			*11,77	*11,77	*9,20	*9,20	*7,65	*7,65	*6,61	*6,61	*5,85	*5,85	*5,26	*5,26	*4,77	4,47	*4,34	3,83			*4,00	3,46	10,69
3					*10,40	*10,40	*8,33	*8,33	*7,01	*7,01	*6,09	*6,09	*5,39	5,23	*4,83	4,42	*4,33	3,80			*3,87	3,38	10,84
2					*11,32	*11,32	*8,87	*8,87	*7,34	*7,34	*6,28	6,24	*5,49	5,15	*4,86	4,37	*4,30	3,76			*3,73	3,34	10,89
1					*6,24	*6,24	*9,14	*9,14	*7,51	*7,51	*6,37	6,13	*5,51	5,08	*4,82	4,32	*4,20	3,74			*3,58	3,34	10,85
0			*1,96	*1,96	*5,33	*5,33	*9,07	*9,07	*7,48	*7,48	*6,32	6,05	*5,43	5,03	*4,70	4,28	*4,01	3,71			*3,41	3,39	10,72
-1	*1,57	*1,57	*2,96	*2,96	*5,66	*5,66	*8,66	*8,66	*7,21	*7,21	*6,10	5,99	*5,21	4,99	*4,45	4,25	*3,68	*3,68			*3,20	*3,20	10,49
-2			*4,06	*4,06	*6,43	*6,43	*7,95	*7,95	*6,70	*6,70	*5,68	*5,68	*4,82	*4,82	*4,03	*4,03	*3,12	*3,12			*2,94	*2,94	10,15
-3			*5,16	*5,16	*7,44	*7,44	*6,94	*6,94	*5,93	*5,93	*5,04	*5,04	*4,22	*4,22	*3,37	*3,37					*2,60	*2,60	9,70
-4					*6,35	*6,35	*5,64	*5,64	*4,88	*4,88	*4,12	*4,12	*3,33	*3,33							*2,49	*2,49	8,86

1. The nominal forces are based on the SAE J1097 standard.
2. The load point is the hook at the rear of the bucket.
3. \* = The nominal loads are based on hydraulic capacity.
4. The nominal loads do not exceed 87% of the hydraulic capacity or 75% of the capacity of the swing.

☺ : Nominal force  
☹ : Nominal force at the side or 360°



# Dimensions & working ranges

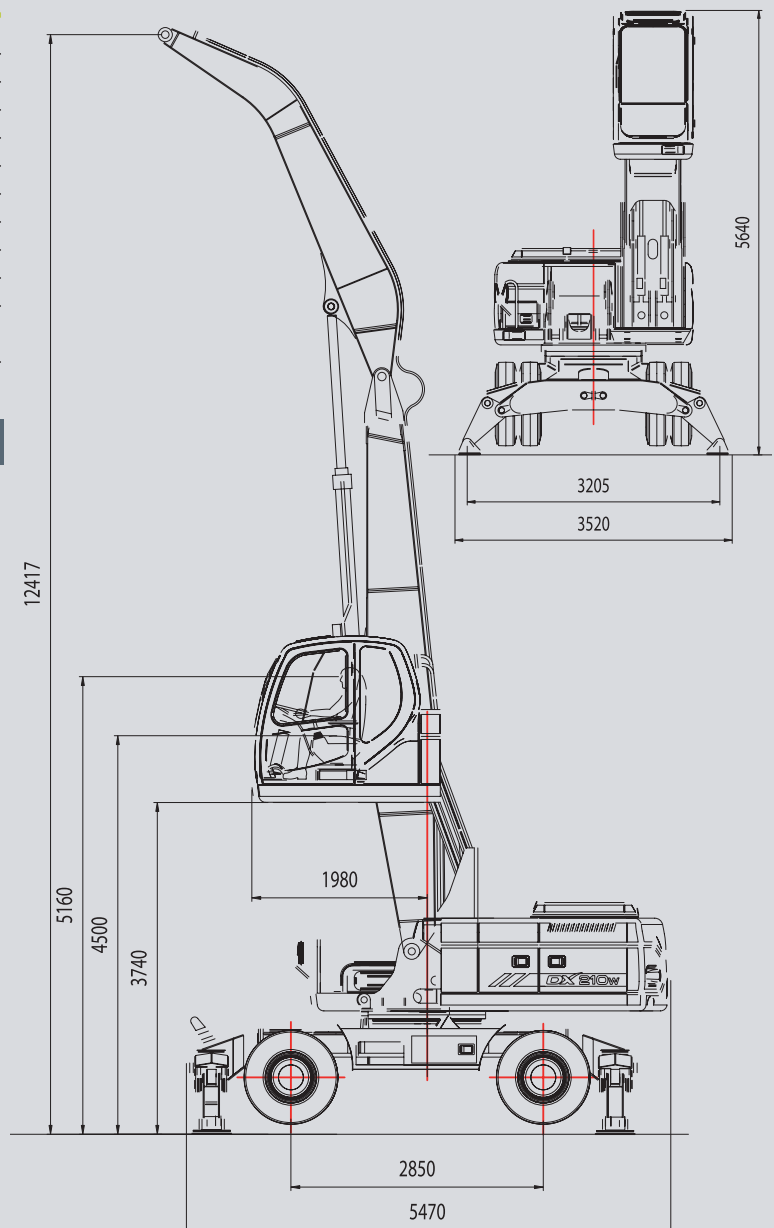


**DX210W**  
MATERIAL HANDLING

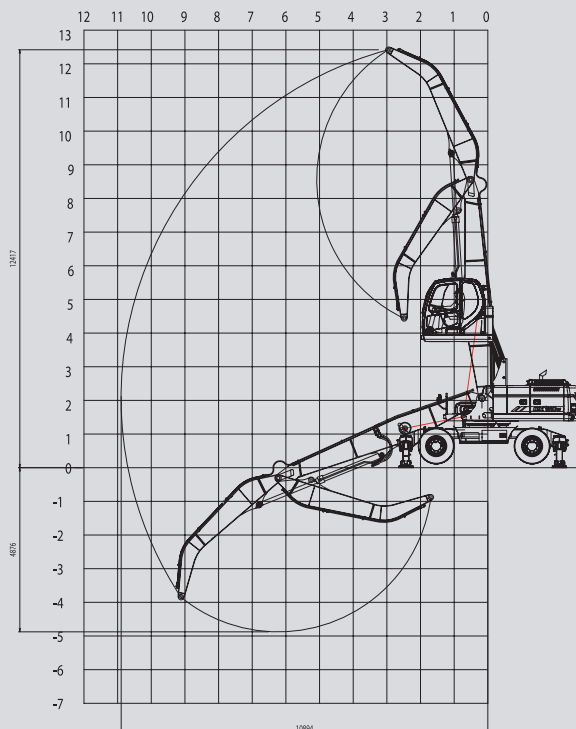
Dimensions – Boom: 6,5 m - Arm: 4,57 m - Counter weight: 4.200 kg

## \* Dimensions

A	Overall width of upper structure	mm	2.530
B	Overall width of cab	mm	1.010
C	Overall height of cab	mm	3.140
D	Tail swing radius	mm	2.750
E	Overall height of boom	mm	3.100
F	Clearance under counterweight	mm	1.259
G	Ground clearance	mm	350
H	Wheel base	mm	2.850
I	Tread	mm	1.914
J	Overall length	mm	9.550
K	Overall tire width with fender	mm	2.500
			Solid Tires 10.00-20-14PR



## Working ranges





**Doosan Infracore**  
Construction Equipment

