

SPEC SHEET

Specifications

Engine

Model _____ Tier 4 interim certified ISUZU AM-4JJ1X
 Type _____ Water-cooled, 4-cycle diesel, 4-cylinder in line,
 High pressure common rail system (electric control), Turbocharger
 with air cooled intercooler, DPD system
 Number of cylinders _____ 4
 Bore/Stroke _____ 95.4 x 104.9 mm
 Horsepower SAE J1349 NET _____ 92.2 kW at 2200 min⁻¹
 Maximum torque SAE J1349 NET _____ 391 Nm at 1800 min⁻¹

Hydraulic system

Max oil flow _____ 2 x142 l/min @ 2200 min⁻¹
 2 variable displacement axial piston pumps with regulating system
 Working circuit pressure _____
 Boom/Arm/Bucket _____ 34.3 MPa
 Boom/Arm/Bucket (with auto power up) _____ 36.3 MPa
 Swing circuit _____ 27.9 MPa
 Travel _____ 34.3 Mpa

Swing

Maximum swing speed _____ 11.5 min⁻¹

Travel

Travel motor _____ Fixed displacement axial piston motor
 Max travel speed _____ 4.0 km/h (Automatic travel speed shifting)
 Low travel speed _____ 2.3 km/h
 Gradeability _____ 70% (35°)
 Drawbar pull _____ 190 kN

Electrical system

Alternator _____ 50 Amp

Undercarriage

Number of carriers rollers (each side) _____ 2
 Number of track rollers (each side) _____ 7
 Number of shoes (each side) _____ 46
 Type of shoe _____ Triple grouser shoe

Capacities

Fuel tank _____ 300 l
 Hydraulic system _____ 165 l
 Cooling system _____ 16.2 l

Weight and ground pressure

With 2.60 m Arm , 0.68 m³ bucket, operator, lubricant, coolant, full fuel tank

	Weight (kg)	Ground pressure (MPa)
600 mm grouser shoe	17.400	0.041

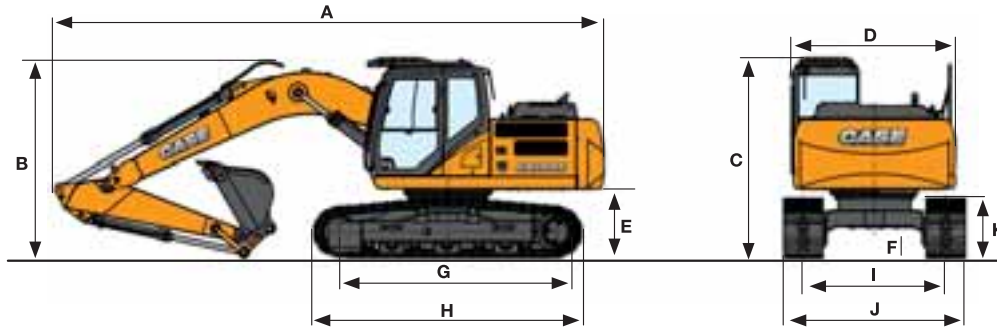


CX C-SERIES HYDRAULIC EXCAVATORS

CX180C

TIER 4 INTERIM

General dimensions



Arm 2.20 m Arm 2.60 m Arm 3.00 m

	Arm 2.20 m	Arm 2.60 m	Arm 3.00 m
Overall length (without attachment)	4500 mm	4500 mm	4500 mm
A Overall length (with attachment)	8470 mm	8440 mm	8500 mm
B Overall height (with attachment)	3090 mm	3090 mm	3130 mm
C Cab height	3090 mm	3090 mm	3090 mm
D Upper structure overall width	2540 mm	2540 mm	2540 mm
Swing (rear end) radius	2450 mm	2450 mm	2450 mm
E Clearance height under upper structure	1040 mm	1040 mm	1040 mm
F Minimum ground clearance	440 mm	440 mm	440 mm
G Wheel base (Center to center of wheels)	3370 mm	3370 mm	3370 mm
H Crawler overall length	4180 mm	4180 mm	4180 mm
I Track gauge	2200 mm	2200 mm	2200 mm
J Undercarriage overall width (with 600 mm shoes)	2800 mm	2800 mm	2800 mm
K Crawler tracks height	920 mm	920 mm	920 mm

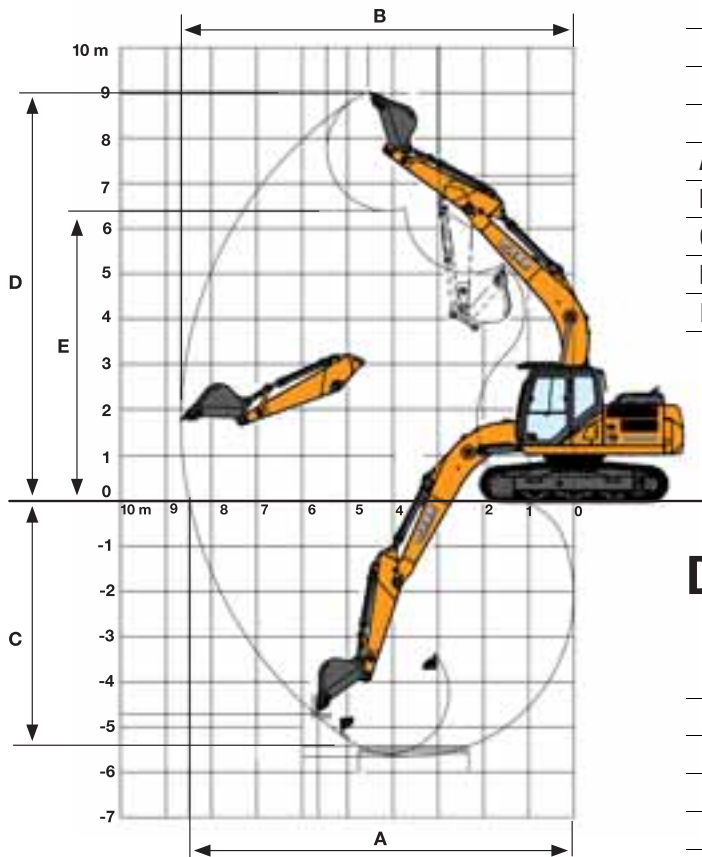
Lifting capacity

Front 360°	REACH							
	0 m	1.5 m	3.0 m	4.5 m	6.0 m	7.5 m	9.0 m	At max reach

Standard arm. 2.60 m arm length, 0.68 m³ bucket, 600G LC shoes, max reach 9.04 m

7.5 m													1570*	1570*	6.53
6.0 m													1430*	1430*	6.69
4.5 m													1390*	1390*	8.36
3.0 m				8540*	8540*	6160*	5590	4920*	3510	3710	2410		1420*	1420*	8.68
1.5 m				8790*	8790*	7800*	5160	5180	3310	3600	2300		1520*	1520*	8.7
0 m				7490*	7490*	7990	4850	4990	3150	3510	2220		1690*	1690*	8.44
-1.5 m		6030*	6030*	9640*	8990	7850	4740	4910	3070	3490	2200		2010*	2010*	7.87
-3.0 m		8600*	8600*	12840*	9330	7890	4790	4950	3120				2660*	2490	6.95
-4.5 m		12540*	12540*	10440*	9550	7020*	5010						4630*	3630	5.5

Performance data



	Arm 2.20 m	Arm 2.60 m	Arm 3.00 m
Boom length	5150 mm	5150 mm	5150 mm
Bucket radius	1350 mm	1350 mm	1350 mm
Bucket wrist action	178 °	178 °	178 °
A Maximum reach at GRP	8500 mm	8870 mm	9220 mm
B Maximum reach	8670 mm	9040 mm	9380 mm
C Max. digging depth	5640 mm	6040 mm	6470 mm
D Max. digging height	9030 mm	9260 mm	9310 mm
E Max. dumping height	6400 mm	6630 mm	6710 mm

Digging force With 0.68 m³ bucket (ISO 6015)

	Arm 2.20 m	Arm 2.60 m	Arm 3.00 m
Arm digging force	90 kN	79 kN	72 kN
- with auto power boost	95 kN	84 kN	77 kN
Bucket digging force	112 kN	112 kN	112 kN
- with auto power boost	118 kN	118 kN	118 kN

Lifting capacity

Front 360°	REACH							
	0 m	1.5 m	3.0 m	4.5 m	6.0 m	7.5 m	9.0 m	At max reach m

Short arm. 2.20 m arm length, 0.68 m³ bucket, 600G LC shoes, max reach 8.67 m

7.5 m														2100*	2100*	6
6.0 m														3750*	3750*	7.26
4.5 m														4980*	4980*	7.97
3.0 m														4580*	3670	7.97
1.5 m														3380*	2480	8.31
0 m														3700	2400	8.33
-1.5 m														3600	2310	8.06
-3.0 m														2250*	2000	7.46
-4.5 m														2670*	2250	6.48
														3600*	2820	4.92
														5210*	4380	

Long arm. 3.00 m arm length, 0.62 m³ bucket, 600G LC shoes, max reach 9.38 m

7.5 m																	1460*	1460*	7
6.0 m																	3010*	3010*	8.08
4.5 m																	2340*	2340*	8.71
3.0 m																	3840*	3690	8.71
1.5 m																	3010*	2550	9.02
0 m																	3700	2440	9.02
-1.5 m																	1440*	1440*	9.04
-3.0 m																	1630*	1630*	8.79
-4.5 m																	1470*	1470*	8.25
																	1640*	1640*	8.25
																	1960*	1870	8.25
																	2550*	2240	7.37
																	4070*	3110	6.02

* Hydraulic capacity 87%

Standard Equipment

ENGINE Isuzu 4-cylinder turbodiesel in line Certified Tier 4 interim / EU stage 3b Electronic fuel injection High pressure common rail system Variable geometry turbo charger Exhaust gas recirculation Diesel Particulate Diffuser (DPD) Neutral safety start Auto-engine warm up, emergency stop Glow-plug pre-heat Idle System: Auto-idle One-touch idle Idle shut-down EPF (Engine Protection Feature) Dual-stage fuel filtration Dual element airfilter Remote oil filter Green plug oil drain 500-hour engine oil change interval Refuelling Pump	Auto travel speed change Selectable work modes Overload warning device SWC - SWING RELIEF CONTROL SSC - SPOOL STROKE CONTROL BEC - BOOM ECONOMY CONTROL AEC - AUTO ECONOMY CONTROL SEC - SWING ECONOMY CONTROL ISO pattern controls Pre-set auxiliary pump settings Switch controlled auxiliary selection Auxiliary valve Auxiliary pipe brackets 5,000 hour hydraulic oil change interval 1,000 hour hydraulic filter change interval Hydraulic track adjustment SAHR brake	Arm 2.60m Bucket linkage with hook Boom mounted work light (70 watt) Auxiliary pipe brackets Centralized lube bank Attachment cushion valve Arm and boom regeneration Arm and boom hose burst check valves	Controls pre-wired for auxiliary Auxiliary select system Straight travel Aux-in port for personal electronics Multifunction color monitor Rear-view camera Anti-theft system (start code system) Rubber floor mat 12-volt electric socket 24-volt cigarette lighter One-piece right hand window 2 internal & 3 external view mirrors 2 working lights (boom & upperstructure) 2 cab top working lights Windshield wiper / washer Clear (Lexan) roof window w/ sunshade Storage compartments On-board diagnostic system Travel alarm with cancel switch
HYDRAULICS Auto power boost Auto swing priority	UPPERSTRUCTURE Isolation mounted cab (fluid and spring) Common key vandal locks Swivel guard belly pan Rear view safety camera	OPERATOR STATION ROPS/FOPS level 1 cab FOPS guard OPG level II on cab roof Pressurized cab Tempered safety glass One-touch lock front window Sun visor & rain deflector AC/heat/defrost w/ auto climate control Hot & coolbox, cup holder & ashtray Interior dome light Cloth covered air-suspension seat Seat-belt Adjustable armrests Tilting consoles - 4-position Low-effort controls (short) Sliding cockpit (180 mm)	UNDERCARRIAGE 600 mm steel shoes, triple semigrouser Full overlap turntable bearing tub Single track guide

Options

HYDRAULICS Auxiliary Hydraulics - Single acting pedal activated breaker circuit Pedal-activated multifunction circuit Pedal activated low-flow circuit	Buckets: Extreme / Heavy duty / GP / ditching Hammers, shears, grapples	2-speakers Side-view camera
ATTACHMENT Arm - 2.20 m / 3 m Hydr. or mech quickcoupler	OPERATOR STATION Front cab guard - vertical bars (OPG level 2) Front cab guard - vertical bars (OPG level 1) Front mesh screen AM/FM radio w/ antenna and	UPPERSTRUCTURE Auto centralized greasing system Rubber bumper guard (order through Service Parts)
		UNDERCARRIAGE Steel shoes, triple semi-grouser 700mm, 800mm Triple track guide

Standard and optional equipment shown can vary by country.

Worldwide Case Construction Equipment Contact Information

EUROPE:
via Plava, 80
10135 TORINO - ITALIA

AFRICA/MIDDLE EAST/CIS:
Riva Paradiso 14
6902 Paradiso - SWITZERLAND

NORTH AMERICA/MEXICO:
700 State Street
Racine, WI 53404 U.S.A.

LATIN AMERICA:
Av. General David Sarnoff 2237
32210 - 900 Contagem - MG
Belo Horizonte BRAZIL

ASIA PACIFIC:
Unit 1 - 1 Foundation Place - Prospect
New South Wales - 2148 AUSTRALIA

CHINA:
No. 29, Industrial Premises, No. 376,
De Bao Road, Waigaoqiao Ftz, Pudong,
SHANGHAI, 200131, P.R.C.

CASE Construction Equipment

CNH UK Ltd
Unit 4,
Hayfield Lane Business Park,
Field Lane, Auckland,
Doncaster,
DN9 3FL
Tel. 00800-2273-7373
Fax +44 1302 802829

CASE Customer Assistance
00800-2273-7373

The call is free from a land line. Check in advance with your Mobile Operator if you will be charged.



NOTE: Standard and optional fittings can vary according to the demands and specific regulations of each country. The illustrations may include optional rather than standard fittings - consult your Case dealer. Furthermore, CNH reserves the right to modify machine specifications without incurring any obligation relating to such changes.

Conforms to directive 98/37/CE

