




# ATLAS

## Wheel Excavator 160W



-  16.0 - 17.8 t
-  105 kW (143 hp)
-  0.7 - 1.3 m<sup>3</sup>



STABLE. STRONG. STEADY.

# 160W

## Technical specifications

### ENGINE

Power rating acc. to ISO 9249105 kW (143 HP)	Number of cylinders ..... 6	Alternator..... 24 V / 55 Ah
RPM.....2000/min	Bore / cylinder stroke.....101 / 126	Starter..... 24 V / 4.8 kW
Make / model.....Deutz / TCD 2012 L06 2V	Cooling system.....Water-cooled	
Design.....Turbocharger / charge-air cooling	Air filter.....Dry air filter	
Displacement.....6057 cm <sup>3</sup>	Battery..... 2 x 12 V / 100 Ah	

### HYDRAULIC SYSTEM

• AWE 5 system (Load sensing)	• Suction valves for all work functions	• 2 additional circuits for additional consumer loads possible
• Load limit controlled high-performance pump	• Load-retaining and fine lowering valves in lifting circuit	• Max. oil flow .....260 l/min
• Fuel-efficient flow-on-demand control	• Pipe-break protection valves for lifting cylinders	• Max. operating pressure .....360 bar
• Sensitive, proportional, independent control	• Proportional grab/grab rotating function	• Operating modes: 3 pre-programmed modes (Fine, Eco, Power)
• Primary and secondary protection against overload		

### SWING ASSEMBLY

• Swing motor:	Axial piston motor with priority valve	• Max. swing speed .....9/min
• Swing gear:	Planetary transmission	• Swing torque ..... 41 kNm
• Swing brake:	Automatically controlled multi-disc brake	

### TRACTION DRIVE AND BRAKES

• Variable displacement motor	• Automotive drive and cruise control	• Tractive force.....92.7 kN
• Power-shift transmission	• Max. speed .....20 km/h	• Max. gradeability.....55 %
• Double-acting brake valve	• Off-road speed .....5 km/h	• Dual-circuit brake system ..... Multi-disc
• Travel direction pre-selection via buttons in joystick	• Crawling speed.....1 km/h	• Parking brake ..... Multi-disc

### UNDERCARRIAGE

• 28 tons special excavator axles	• 8 tires (twins) ..... 10.00 - 20	• 4 tires (optional) ..... 600 - 22.5
• Steering axle with automatic oscillating axle locking		

### FILL CAPACITIES

• Fuel tank .....247 litres	• Engine oil..... 10 litres	• Hydraulic system.....220 litres
• Cooling system.....38 litres	• Hydraulic tank .....180 litres	

### DRIVER'S CAB

• Meets latest safety standards	<b>CONTROL:</b>	<b>CLIMATE CONTROL:</b>
• Extra large entry zone	• Ergonomic joysticks with proportional slide control	• Air conditioning equipped as standard
• Spacious leg room	• Slim steering column, height and tilt adjustable	• Excellent air distribution through optimally arranged nozzles
• Excellent circumferential visibility	• Indicators, controls and operating switches are clearly arranged	
• Preparation for radio installation with mute function		
<b>DRIVER'S SEAT:</b>	<b>MONITORING:</b>	<b>SOUND LEVELS:</b>
• Air-cushioned comfort seat (seat heating optional)	• Operating data display screen	• ISO 6396 (LpA) in driver's cab ..... 74 dB(A)
• Arm rests and lumbar support	• Automatic system for monitoring, warning and storage of data	• 2000/14 EG (LwA) ambience level .99 dB(A)

## Working equipment

### OPERATING WEIGHTS

	MONOBLOCK BOOM 4.32 m (C6.3M)		ADJUSTABLE BOOM Base arm 1.87 m (C6.41) Boom 3.10 m (C6.46)	
	Stick 2.15 m (D6.2)	Stick 2.65 m (D6.3)	Stick 2.15 m (D6.2)	Stick 2.65 m (D6.3)
Support and dozer blade	16.0 t	16.1 t	16.4 t	16.5 t
SDB / outriggers	17.1 t	17.2 t	17.5 t	17.6 t
4 outriggers	17.3 t	17.4 t	17.7 t	17.8 t

Operating weight incl. driver, fuel, lubricants and coolant plus 1.0 ton for attachments

### EQUIPMENT

<b>BASIC UNIT ATLAS 160W</b> (can be combined)	<b>STANDARD EQUIPMENT:</b>	<ul style="list-style-type: none"> <li>• Ready for electric cooling box</li> <li>• Different options for storage, compartment for documents</li> <li>• Seat adjustable separately from console</li> <li>• Rear view security camera with 5" LCD-colour monitor</li> <li>• Heat-absorbing glass, tinted windows</li> <li>• Automotive drive and cruise control</li> <li>• Operating data display screen</li> <li>• Bottle holder</li> </ul>
<ul style="list-style-type: none"> <li>• Wheel Excavator 160W with support and dozer blade and 2 lifting cylinders (A6.2)</li> </ul>	<b>Engine:</b>	
<b>BOOMS:</b>	<ul style="list-style-type: none"> <li>• Automatic idling system</li> <li>• Diesel pre-filter</li> <li>• Engine monitoring</li> </ul>	
<ul style="list-style-type: none"> <li>• Monoblock boom with stick cylinder 4.32 m (C6.3M)</li> <li>• Adjustable boom consisting of base arm 1.87 m (C6.41) adjustable cylinder plus boom 3.10 m (C6.46) with stick cylinder</li> </ul>	<b>HYDRAULIC SYSTEM:</b>	
<b>STICKS:</b>	<ul style="list-style-type: none"> <li>• Proportional grab/grab rotating function</li> <li>• Accumulator for emergency lowering of boom system</li> <li>• Pipe break protection valves for lifting cylinders</li> </ul>	<b>EQUIPMENT:</b>
<ul style="list-style-type: none"> <li>• Stick 2.15 m (D6.2)</li> <li>• Stick 2.65 m (D6.3)</li> </ul>	<ul style="list-style-type: none"> <li>• Max. load-limit control</li> <li>• Cylinder end position damping</li> </ul>	<ul style="list-style-type: none"> <li>• Joint bearings in stick and bucket cylinders</li> <li>• Combined lubricating points for swing bearing and arm equipment</li> </ul>
<b>BUCKET TIPPING CYLINDER:</b>		<b>UNDERCARRIAGE:</b>
<ul style="list-style-type: none"> <li>• Bucket tipping cylinder with bucket linkage (F6.1)</li> </ul>	<b>Cab:</b>	<ul style="list-style-type: none"> <li>• Power-shift transmission</li> <li>• Wet disc brakes</li> <li>• Toolbox in undercarriage</li> </ul>
	<ul style="list-style-type: none"> <li>• Air-conditioning</li> <li>• Preparation for radio installation with mute function</li> <li>• Slim steering column, height and tilt adjustable</li> </ul>	

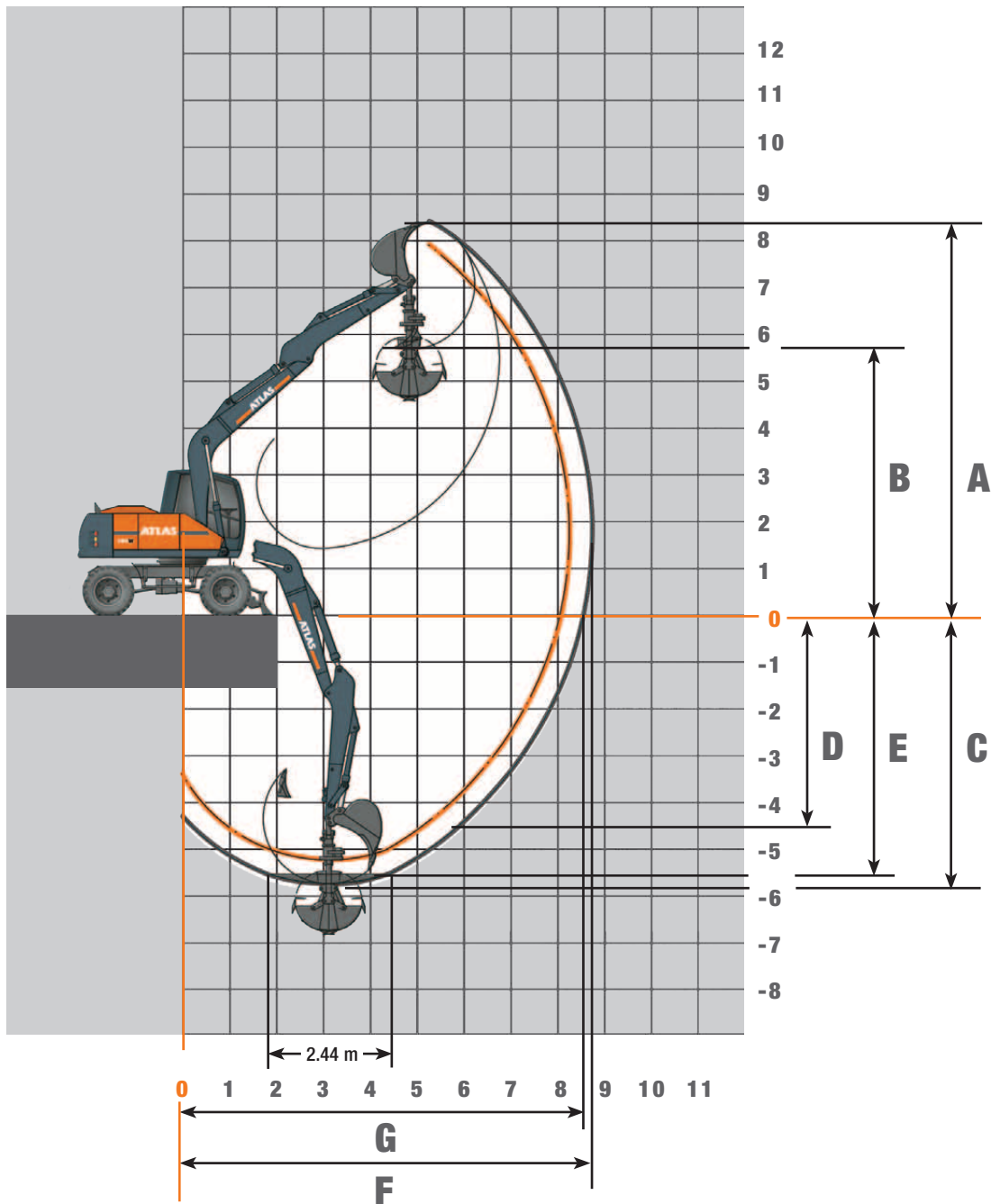
### ADDITIONAL EQUIPMENT

<b>Engine:</b>	<b>Equipment:</b>	<ul style="list-style-type: none"> <li>• Cab elevation</li> <li>• Xenon working lights</li> <li>• Proportional control of supports by slide in joystick</li> </ul>
<ul style="list-style-type: none"> <li>• Refueling pump</li> <li>• Engine speed adjustment via potentiometer</li> <li>• Auxiliary heating</li> <li>• Cold start assistance</li> </ul>	<ul style="list-style-type: none"> <li>• Automatically controlled and monitored electric central lubrication system</li> </ul>	
<b>Hydraulics:</b>	<b>Cab:</b>	<b>Undercarriage:</b>
<ul style="list-style-type: none"> <li>• Hydraulic kit, to operate front and rear supports separately</li> <li>• Hydraulic kit, to operate supports per axle separately</li> <li>• Biodegradable oil</li> </ul>	<ul style="list-style-type: none"> <li>• Cab protection guard</li> <li>• Beacon light</li> <li>• GPS/GSM telemetric system for monitoring of operating data, consumption, position</li> <li>• Heated driver's seat</li> <li>• Radio CD/MP3, front AUX in, USB</li> <li>• Electric cooling box</li> </ul>	<ul style="list-style-type: none"> <li>• Wide axles (overall width 2750 mm)</li> <li>• Wide dozer blade (2750 mm)</li> <li>• High-speed execution 30 km/h</li> </ul>
		<b>Further special equipment:</b> See price list

### ATTACHMENTS (SELECTION)

	Bucket F415	Bucket F416	Bucket F417	Bucket F648
Capacity SAE	0.67 m <sup>3</sup>	0.82 m <sup>3</sup>	0.92 m <sup>3</sup>	1.12 m <sup>3</sup>
Cutting width	850 mm	1000 mm	1100 mm	1300 mm

## Working ranges Monoblock boom 4.32 m (C6.3M)



STICK LENGTHS	2.15 m (D6.2)	2.5 m (D6.3)
A Max. digging height	8.10 m	8.35 m
B Max. dumping height	5.35 m	5.65 m
C Max digging depth	5.20 m	5.70 m
D Max. vertical wall digging depth	4.05 m	4.55 m
E Max. digging depth of cut for 2.44 m level	4.95 m	5.50 m
F Max. digging reach	8.25 m	8.70 m
G Max. digging reach at ground level	8.05 m	8.50 m
Max. bucket digging force	130 kN	130 kN
Max. stick digging force	82 kN	72 kN

Unit is equipped with monoblock boom 4.32 m (C6.3M).

## Lifting capacities Monoblock boom 4.32 m (C6.3M)

### Lifting capacities Monoblock boom 4.32 m (C6.3M) and stick 2.15 m (D6.2). Max reach 8.20 m

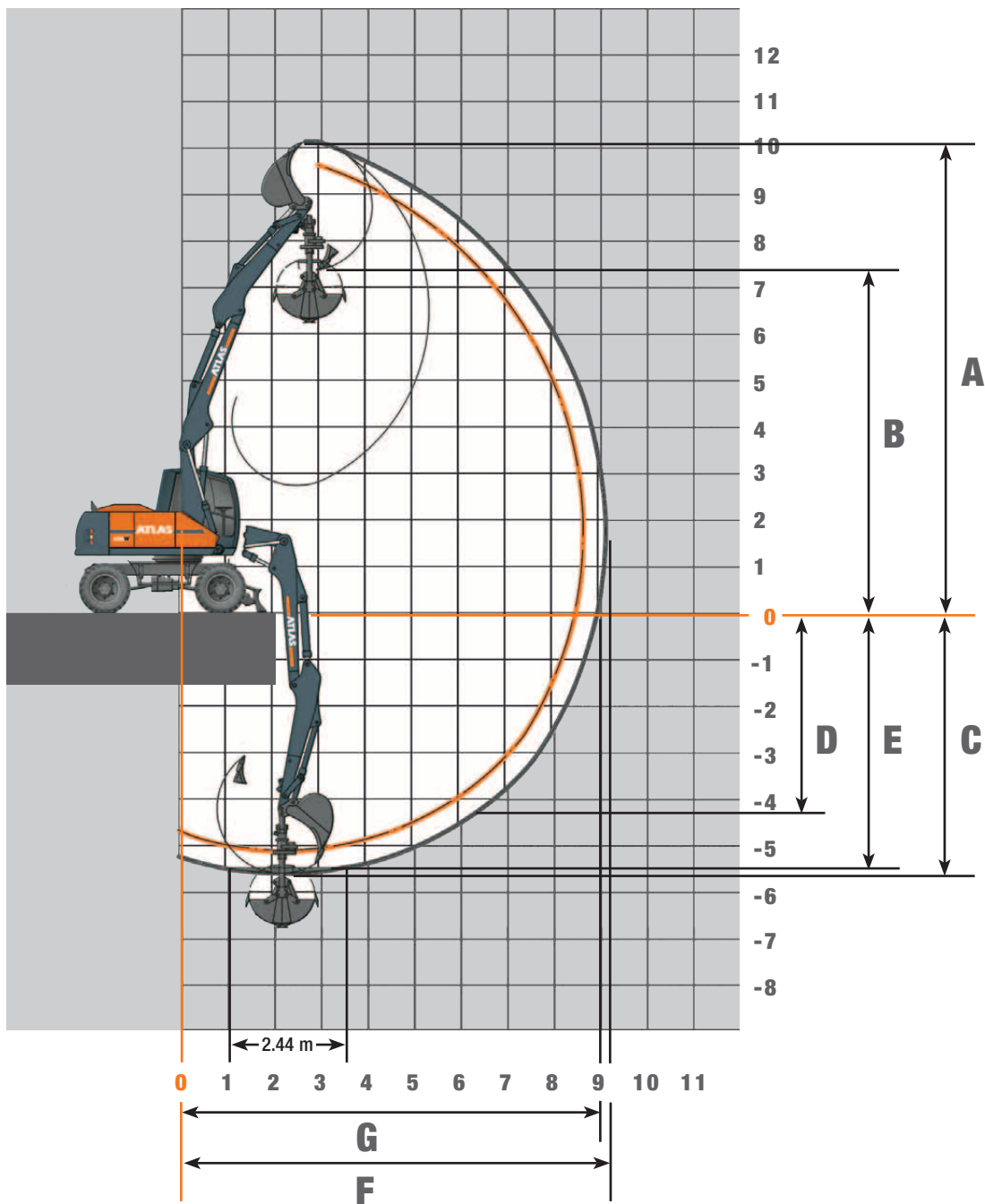
Height	Undercarriage type	3.0 m		4.5 m		6.0 m		7.5 m	
		FRONT	LATERAL	FRONT	LATERAL	FRONT	LATERAL	FRONT	LATERAL
+6.0 m	SDB rear, raised								
	SDB rear, supported								
	Outriggers rear/front, supported								
	SDB/outriggers supported								
+4.5 m	SDB rear, raised					3927*	2885		
	SDB rear, supported					3927*	3207		
	Outriggers rear/front, supported					3927*	3927*		
	SDB/outriggers supported					3927*	3927*		
+3.0 m	SDB rear, raised			5001*	4225	4117*	2827		
	SDB rear, supported			5001*	4731	4117*	3148		
	Outriggers rear/front, supported			5001*	5001*	4117*	4117*		
	SDB/outriggers supported			5001*	5001*	4117*	4117*		
+1.5 m	SDB rear, raised			5899*	3979	4438*	2730		
	SDB rear, supported			5899*	4476	4438*	3048		
	Outriggers rear/front, supported			5899*	5899*	4438*	4438*		
	SDB/outriggers supported			5899*	5899*	4438*	4192		
+0 m	SDB rear, raised	7470*	6654	6289*	3829	4546	2661		
	SDB rear, supported	7470*	7470*	6289*	4322	4551*	2979		
	Outriggers rear/front, supported	7470*	7470*	6289*	6289*	4551*	4551*		
	SDB/outriggers supported	7470*	7470*	6289*	6138	4551*	4118		
-1.5 m	SDB rear, raised	8854*	6717	5928*	3820				
	SDB rear, supported	8854*	7751	5928*	4312				
	Outriggers rear/front, supported	8854*	8854*	5928*	5928*				
	SDB/outriggers supported	8854*	8854*	5928*	5928*				
-3.0 m	SDB rear, raised	6451*	6451*	4112*	3958				
	SDB rear, supported	6451*	6451*	4112*	4112*				
	Outriggers rear/front, supported	6451*	6451*	4112*	4112*				
	SDB/outriggers supported	6451*	6451*	4112*	4112*				

### Lifting capacities Monoblock boom 4.32 m (C6.3M) and stick 2.65 m (D6.3). Max reach 8.70 m

Height	Undercarriage type	3.0 m		4.5 m		6.0 m		7.5 m	
		FRONT	LATERAL	FRONT	LATERAL	FRONT	LATERAL	FRONT	LATERAL
+6.0 m	SDB rear, raised								
	SDB rear, supported								
	Outriggers rear/front, supported								
	SDB/outriggers supported								
+4.5 m	SDB rear, raised					3542*	2918		
	SDB rear, supported					3542*	3238		
	Outriggers rear/front, supported					3542*	3542*		
	SDB/outriggers supported					3542*	3542*		
+3.0 m	SDB rear, raised			4554*	4266	3836*	2833		
	SDB rear, supported			4554*	4554*	3836*	3152		
	Outriggers rear/front, supported			4554*	4554*	3836*	3836*		
	SDB/outriggers supported			4554*	4554*	3836*	3836*		
+1.5 m	SDB rear, raised			5567*	3985	4242*	2716		
	SDB rear, supported			5567*	4479	4242*	3031		
	Outriggers rear/front, supported			5567*	5567*	4242*	4242*		
	SDB/outriggers supported			5567*	5567*	4242*	4199		
+0 m	SDB rear, raised	7879*	6551	6168*	3789	4494*	2621		
	SDB rear, supported	7879*	7569	6168*	4276	4494*	2935		
	Outriggers rear/front, supported	7879*	7879*	6168*	6168*	4494*	4494*		
	SDB/outriggers supported	7879*	7879*	6168*	6126	4494*	4097		
-1.5 m	SDB rear, raised	9359*	6553	6079*	3733	4296*	2603		
	SDB rear, supported	9359*	7571	6079*	4218	4296*	2917		
	Outriggers rear/front, supported	9359*	9359*	6079*	6079*	4296*	4296*		
	SDB/outriggers supported	9359*	9359*	6079*	6062	4296*	4077		
-3.0 m	SDB rear, raised	7495*	6709	4967*	3813				
	SDB rear, supported	7495*	7495*	4967*	4301				
	Outriggers rear/front, supported	7495*	7495*	4967*	4967*				
	SDB/outriggers supported	7495*	7495*	4967*	4967*				

All values in kilogrammes (kg) were determined acc. to ISO 10567 and include a stability factor of 1.33 or 87% of the hydraulic lifting capacity. These values are applicable at the top of the arm with optimum positioning of the corresponding arm system and with power boost switched on. \*Value limited due to hydraulics.

## Working ranges Adjustable boom: Base arm 1.87 m (C6.41) and boom 3.10 m (C6.46)



STICK LENGTHS	2.15 m (D6.2)	2.65 m (D6.3)
A Max. digging height	9.70 m	10.10 m
B Max. dumping height	6.95 m	7.35 m
C Max digging depth	5.10 m	5.60 m
D Max. vertical wall digging depth	3.80 m	4.30 m
E Max. digging depth of cut for 2.44 m level	5.00 m	5.50 m
F Max. digging reach	8.70 m	9.20 m
G Max. digging reach at ground level	8.55 m	9.00 m
Max. bucket digging force	130 kN	130 kN
Max. stick digging force	82 kN	72 kN

Unit is equipped with standard adjustable boom: base arm 1.87 m (C6.41) and boom 3.10 m (C6.46).

## Lifting capacities Adjustable boom: Base arm 1.87 m (C6.41) and boom 3.10 m (C6.46)

### Lifting capacities Adjustable boom: Base arm 1.87 m (C6.41) and boom 3.10 m (C6.46) with stick 2.15 m (D6.2). Max reach 8.70 m

Height	Undercarriage type	3.0 m		4.5 m		6.0 m		7.5 m	
		FRONT	LATERAL	FRONT	LATERAL	FRONT	LATERAL	FRONT	LATERAL
+6.0 m	SDB rear, raised			4525*	4463				
	SDB rear, supported			4525*	4525*				
	Outriggers rear/front, supported			4525*	4525*				
	SDB/outriggers supported			4525*	4525*				
+4.5 m	SDB rear, raised	6478*	6478*	4879*	4386*	4044*	2907		
	SDB rear, supported	6478*	6478*	4879*	4830	4044*	3232		
	Outriggers rear/front, supported	6478*	6478*	4879*	4879*	4044*	4044*		
	SDB/outriggers supported	6478*	6478*	4879*	4879*	4044*	4044*		
+3.0 m	SDB rear, raised	7198*	7198*	5575*	4269	4252*	2905		
	SDB rear, supported	7198*	7198*	5575*	4700*	4252*	3230		
	Outriggers rear/front, supported	7198*	7198*	5575*	5575*	4252*	4252*		
	SDB/outriggers supported	7198*	7198*	5575*	5575*	4252*	4227		
+1.5 m	SDB rear, raised	8536*	7249	6074*	4217*	4417*	2819		
	SDB rear, supported	8536*	8098	6074*	4637*	4417*	3142		
	Outriggers rear/front, supported	8536*	8536*	6074*	6074*	4417*	4417*		
	SDB/outriggers supported	8536*	8536*	6074*	6074*	4417*	4189*		
+0 m	SDB rear, raised	9803*	7179	6112*	4119	4437*	2684		
	SDB rear, supported	9803*	8201	6112*	4624	4437*	3004		
	Outriggers rear/front, supported	9803*	9803*	6112*	6112*	4437*	4437*		
	SDB/outriggers supported	9803*	9803*	6112*	6092	4437*	4186		
-1.5 m	SDB rear, raised	10090*	6951	6279*	3956	4177*	2588		
	SDB rear, supported	10090*	8004	6279*	4456	4177*	2906		
	Outriggers rear/front, supported	10090*	10090*	6279*	6279*	4177*	4177*		
	SDB/outriggers supported	10090*	10090*	5056*	6279*	4177*	4081		
-3.0 m	SDB rear, raised	9759*	6938	5056*	3838				
	SDB rear, supported	9759*	7991	5056*	4334				
	Outriggers rear/front, supported	9759*	9759*	5056*	5056*				
	SDB/outriggers supported	9759*	9759*	5056*	5056*				

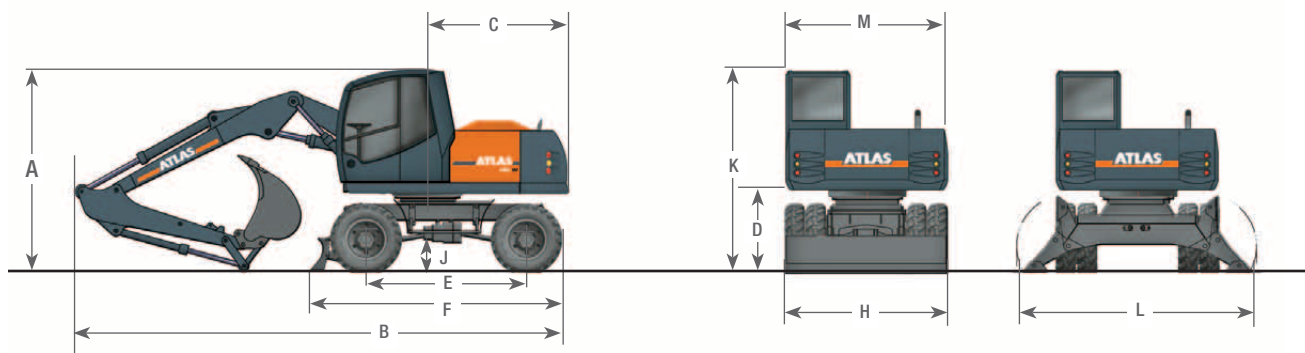
### Lifting capacities Adjustable boom: Base arm 1.87 m (C6.41) and boom 3.10 m (C6.46) with stick 2.65 m (D6.3). Max reach 9.20 m

Height	Undercarriage type	3.0 m		4.5 m		6.0 m		7.5 m	
		FRONT	LATERAL	FRONT	LATERAL	FRONT	LATERAL	FRONT	LATERAL
+6.0 m	SDB rear, raised			4133*	4133*	3748*	2926		
	SDB rear, supported			4133*	4133*	3748*	3251		
	Outriggers rear/front, supported			4133*	4133*	3748*	3748*		
	SDB/outriggers supported			4133*	4133*	3748*	3748*		
+4.5 m	SDB rear, raised			4515*	4414	3808*	2973		
	SDB rear, supported			4515*	4515*	3808*	3261		
	Outriggers rear/front, supported			4515*	4515*	3808*	3808*		
	SDB/outriggers supported			4515*	4515*	3808*	3808*		
+3.0 m	SDB rear, raised	7074*	7074*	5253*	4267	4071*	2937	3334	1984
	SDB rear, supported	7074*	7074*	5253*	4705*	4071*	3215	3401*	2218
	Outriggers rear/front, supported	7074*	7074*	5253*	5253*	4071*	4071*	3401*	3401*
	SDB/outriggers supported	7074*	7074*	5253*	5253*	4071*	4071*	3401*	3069
+1.5 m	SDB rear, raised	8397*	7186	5900*	4179	4316*	2913	3295	1946
	SDB rear, supported	8397*	8033	5900*	4599*	4316*	3205	3410*	2180
	Outriggers rear/front, supported	8397*	8397*	5900*	5900*	4316*	4316*	3410*	3410*
	SDB/outriggers supported	8397*	8397*	5900*	5900*	4316*	4151	3410*	3032
+0 m	SDB rear, raised	9469*	7220	6027*	4153	4361*	2750	3222*	1897
	SDB rear, supported	9469*	8081	6027*	4617	4361*	3073	3222*	2130
	Outriggers rear/front, supported	9469*	9469*	6027*	6027*	4361*	4361*	3222*	3222*
	SDB/outriggers supported	9469*	9469*	6027*	6015*	4361*	4165	3222*	2982
-1.5 m	SDB rear, raised	9893*	6938	6116*	3970	4453*	2594		
	SDB rear, supported	9893*	7993	6116*	4472	4453*	2913		
	Outriggers rear/front, supported	9893*	9893*	6116*	6116*	4453*	4453*		
	SDB/outriggers supported	9893*	9893*	6116*	6111*	4453*	4092		
-3.0 m	SDB rear, raised	10284*	6906	5993*	3812				
	SDB rear, supported	10284*	7959	5993*	4308				
	Outriggers rear/front, supported	10284*	10284*	5993*	5993*				
	SDB/outriggers supported	10284*	10284*	5993*	5993*				

All values in kilogrammes (kg) were determined acc. to ISO 10567 and include a stability factor of 1.33 or 87% of the hydraulic lifting capacity. These values are applicable at the top of the arm with optimum positioning of the corresponding arm system and with power boost switched on. \*Value limited due to hydraulics.

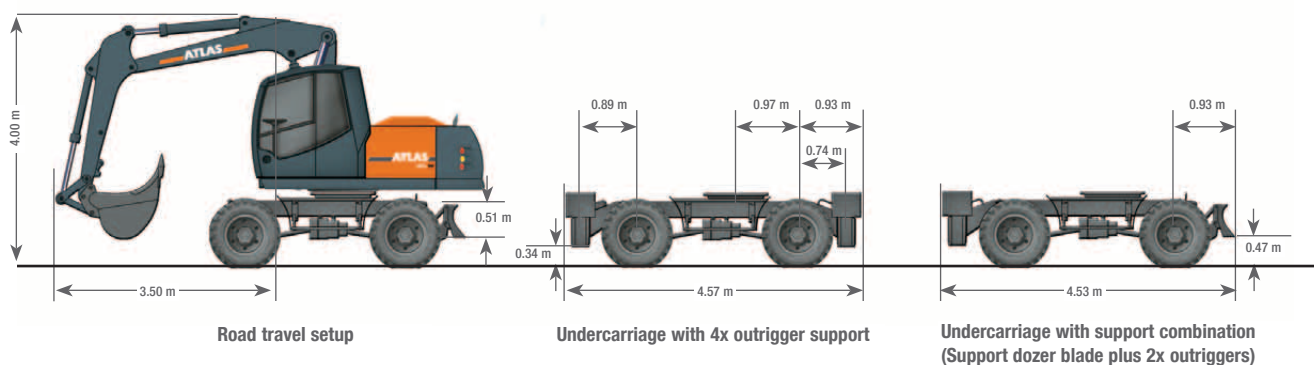
# ATLAS

## Dimensions



<b>A</b>	<b>TRANSPORT HEIGHT (with bucket)</b>		<b>C</b>	<b>TAIL SWING RADIUS</b> .....	2.19 m
	Adjustable boom* with stick 2.15 m .....	3.08 m	<b>D</b>	<b>CLEARANCE UNDER COUNTERWEIGHT</b> .....	1.22 m
	Adjustable boom* with stick 2.65 m .....	3.08 m	<b>E</b>	<b>WHEEL BASE</b> .....	2.50 m
	Monoblock boom 4.32 m with stick 2.15 m .....	3.15 m	<b>F</b>	<b>UNDERCARRIAGE LENGTH</b> .....	3.98 m
	Monoblock boom 4.32 m with stick 2.65 m .....	3.15 m	<b>H</b>	<b>DOZER BLADE WIDTH</b> .....	2.49 m
<b>B</b>	<b>TRANSPORT LENGTH</b>		<b>J</b>	<b>GROUND CLEARANCE</b> .....	0.45 m
	Adjustable boom* with stick 2.15 m .....	7.71 m	<b>K</b>	<b>OVERALL HEIGHT OF CAB</b> .....	3.08 m
	Adjustable boom* with stick 2.65 m .....	8.85 m	<b>L</b>	<b>OUTRIGGERS WIDTH (extended)</b> .....	3.50 m
	Monoblock boom 4.32 m with stick 2.15 m .....	7.55 m	<b>M</b>	<b>OVERALL WIDTH OF SUPERSTRUCTURE</b> .....	2.49 m
	Monoblock boom 4.32 m with stick 2.65 m .....	7.55 m			

\* Adjustable boom: Base arm 1.87 m (C6.41) and boom 3.10 m (C6.46)



Road travel setup

Undercarriage with 4x outrigger support

Undercarriage with support combination  
(Support dozer blade plus 2x outriggers)

[www.atlasgmbh.com](http://www.atlasgmbh.com)

**ATLAS Maschinen GmbH**

EXCAVATORS

Atlasstrasse 6

27777 Ganderkesee, Germany

T: +49 (0) 4222 954 0

F: +49 (0) 4222 954 343

info@atlasgmbh.com

160W-EN (1) Effective date: August 2010. Product specifications and prices are subject to change without notice or obligation. The photographs and/or drawings in this document are for illustrative purposes only. Refer to the appropriate Operator's Manual for instructions on the proper use of this equipment. Failure to follow the appropriate Operator's Manual when using our equipment or to otherwise act irresponsibly may result in serious injury or death. The only warranty applicable to our equipment is the standard written warranty applicable to the particular product and sale and Atlas makes no other warranty, express or implied. The only warranty applicable to our equipment is the standard written warranty applicable to the particular product and sale and Atlas makes no other warranty, express or implied. Products and services listed may be trademarks, service marks or trade-names of Atlas Maschinen GmbH and/or its subsidiaries. All rights are reserved. Atlas® is a registered trademark of Atlas Maschinen GmbH. Copyright © 2010 Atlas Maschinen GmbH.